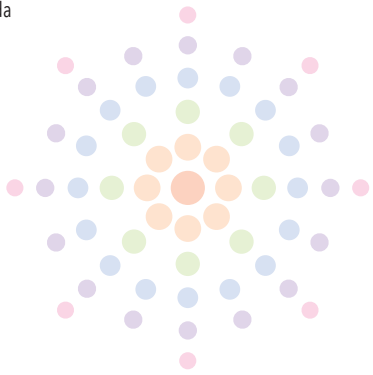


THE UMBRELLA TEAM

The Umbrella staff are leaders and professionals in the fields of visual and performing art forms, educational programming, the environment, and community outreach. The team shares a commitment to enriching lives and building a vibrant community through the arts.

- Executive Director: Jerry Wedge
- Director of Performing Arts: Brian Boruta
- Office Administrator: Nick Castellano
- Assistant Director of Development: Katie Cimet
- Major Gifts Officer: Megan Connor
- Development Associate: Bridget Doherty
- Director of Marketing and Strategic Communications: Stewart Ikeda
- Chief Financial Officer: Chris Mekal
- Marketing Assistant: Rachel Olson
- Finance Director: Wendy Page
- Arts & Environment Program Coordinator: Caroline Provost
- Performing Arts Program Assistant: Cathie Regan
- Facilities Manager: Ron Richards
- Director of Education: Jason Springer
- Volunteer Coordinator: Kathy Warren
- Director of Development: Eileen Nugent Williston



THANK YOU TO OUR IN KIND DONORS AND COMMUNITY PARTNERS!

- 80 Thoreau
- A2D Productions
- Acqua Sotto
- Adelita
- AVFX
- Jack Bouchard
- Joseph Leo Bwarie
- The Cheese Shop
- Greg Ciccarelli
- Concord Journal
- Concord Land Conservation Trust
- Concord Market
- Mary Deissler, From The Top
- Discover Concord
- Wendy Jacobs Dodson
- Pam Ellertson
- Al Ellison
- Farfalle
- Fiorella's Cucina
- Friends of the Bruce Freeman Rail Trail
- Bob Greim
- The Gross Family
- Haute Coffee
- Julie Helmes
- Mary Hull, WBUR
- Joyce Kulhawik
- Lux Box
- Lyle Lovett
- Amy Macdonald
- Mahoney's Garden Center
- Ron Mann
- Mass Audubon/Drumlin Farm
- Ellen McHale
- Liam McHale Photography
- Steve Miller
- Minuteman Media Network
- Minute Man National Historical Park
- Ryan Montbleau
- Andy Newman
- OARS
- Lizzy Pacelle
- REAL
- River Stewardship Council
- David Rosen
- Jim Sabitus
- Alex Salvi
- Paul Sullivan
- Livingston Taylor
- Town of Concord Department of Natural Resources
- Trail's End Café
- Verrill Farm
- Nick Warchol
- Waterman Design
- West Concord Liquors
- Charles Yang
- Robin Young
- And to all of our wonderful teachers, artists, volunteers, performers, committees, and staff



THE UMBRELLA 2019/20 ANNUAL REPORT



A YEAR OF CELEBRATING COMMUNITY AND GIVING THANKS



40 STOW STREET, CONCORD MA 01742  
978.371.0820  
THEUMBRELLAARTS.ORG



## OUR MISSION:

The Umbrella enriches lives and builds a vibrant and inclusive community through the arts.

We promote creativity, learning, personal growth, and cultural exchange through accessible arts education programs, performing and visual arts presentations, and community collaborations.

## THANK YOU, LEADERSHIP!

With sincere appreciation, we thank The Umbrella's volunteer leadership, many of whom have guided and supported our arts center for a long time. We are grateful for your gifts, time, talent, and all that you do to champion The Umbrella's mission.

### BOARD OF DIRECTORS

Deborah Yamin  
*Board Chair*

Ellen McHale  
*Vice Chair*

Frank Hill  
*Treasurer*

Cathy Folts  
*Clerk*

Elizabeth Cochary Gross  
*Capital Campaign Chair*

Gail Burr

Pierre Chiha

Tete Cobblah

Kevin Foley

Michael Goodwin

Robert Le Roy

Kate Reid

Debra Rutter

Jennifer C. Schünemann

Marc Silver

Nancy Traversy

Tony Williams

*We would like to recognize Bryon Deysher, Frank Hill, and Gregory Maguire who are stepping down from the board. We are pleased that Frank Hill will be remaining in his role as Treasurer. We are grateful for their leadership and continued support. Please join us in welcoming Casey Carlson and Andy Newman who joined the board in November 2020.*

### ADVISORY COUNCIL

Jeff Adams

Amy Barrett

Walter Birge

Jill Block

Alisha Boyajian

Jennifer Brock

Andrea Brox

Kim Burns

Alicia and Rick Cleary

Di Clymer

Gayle and Rich Colman

Ann Marie Connolly

Anne Denna

Dave Douglas

Tracie Dunn

Bob Ewing

Bernadette Feeney

Leah Flanigan

Ellen Gaies

Natalie Gardner

Sue Gladstone

Andrew Goldstein

Lucy Goldstein

Sing Hanson

Jennifer and Ed Hurley-

Wales

Denis Jenssen

Mary Johnson

Karen Jourdenais

Claire King

Melissa Koester

Carol Krauss

Rickie Krug

Betsy Levinson

Susanne Liebich

Jean Lightman

Bar and Bart Littlefield

Peter Lovis

Halley Mdlwain

Sven Olson

Seema Peterson

Barbara Powell

Laura Reynolds

Mathias Rosenfeld

Chris Saia

Jon Schmalenberger

Dan Schrager

Melinda Shumway

Sergio Siani

Mally Skok

Priscilla White Sturges

Hilary Taylor

Valerie Thayer

Charity Tremblay

Bill Turville

Jay Vogt

Jim Willis

Carol Wilson

Lissa Winstanley

Elise Woodward

Linda Ziemba



Dear members of The Umbrella community,

Fiscal Year 2020 began with the celebratory opening of our beautiful, new, state-of-the-art space at 40 Stow Street. From the airy, sun-filled classrooms to the adaptive performance spaces, from the galleries suffused with the creativity of our artists to the amazing clay studio and the ground-breaking maker space for artisans' hands and technologically advanced digital creation, YOU brought a center filled with art to the center of Concord.

And then you brought it to life as we opened our doors and reveled in record-breaking attendance numbers for our exhibits, classes, Ninjas in Nature, Winter Market, and productions ranging from the toe-tapping 42nd Street to the heartfelt Hundred Days.

Never could we have anticipated needing to close our doors in March as together, we all faced the challenge of COVID-19. Yet, despite the uncertainty we all felt, you enabled us to – not just go on – but to re-think our vision and respond nimbly to the community's changing needs.

The second half of our year was transformed. Plans for productions already in the works, heartbreakingly, had to be canceled but gave way to an initiative to inspire regional playwrights to create pieces about and for this unique time. Classes and summer camp found new vibrant life on digital platforms with The Umbrella @ Home! Our studio artists continued to find inspiration and gathered together in mutual support via Zoom. And, as we all sought ways to connect and engage, we took art online and outdoors, creating our broadest ever Earth Day celebration and launching Go Out Doors! The culminating moment came in May, when finding ways to be together despite the need to stay apart inspired The Umbrella's most successful gala ever, Stand By Me, a virtual gathering of more than 1,000 households.

This year especially, we are humbled by the breadth and depth of your support. And we take seriously your investment in us and the truly meaningful role art plays in all our lives.

We are grateful to our dedicated Board, our creative staff members, our amazing artists and teachers...and to all of you.

Keep creating!

  
Jerry Wedge, Executive Director

  
Deborah Yamin, Board Chair



**In memory of Allie Kussin**  
Board Chair of The Umbrella Arts Center  
2013-2020

The Umbrella Arts Center was created through the inspiration of its artists and the passion, dedication, and sheer will of its supporters. Our community lost a great friend and champion last spring when former Board Chair, Allie Kussin, passed away after a long battle with cancer. Her ten years of service to this community is second only to the great gift of her spirit to us all. Upon her passing, a fellow Board member noted, "Allie was kindness." She shared her kindness, strength, and grace with us all. She was beloved, and she will be missed.

"Nothing can dim the light that shines from within." ~ Maya Angelou





More than 2,000 youth and adults participated in 180+ Arts Education classes, workshops, camps, and events



Over 5,000 words were collected from community members prompted by the “Earth Press Project: Witness,” an outdoor art project that asked visitors about the change they hope to see in the world.



## THE UMBRELLA FY20 PROGRAM HIGHLIGHTS

### ARTS EDUCATION

2019/20 was a year of great accomplishment and dynamic reinvention for The Umbrella’s Education Program. The year began at our temporary location, The Umbrella Annex, where we hosted a fun but shortened summer arts camp as well as our town partnership camp, Arts & Rec. The camps were quickly followed by a return to our newly opened building at 40 Stow Street. In just weeks, we set up all nine newly designed and renovated classrooms including the ceramics classroom, independent studio and kiln room, new maker space, new digital media and design classroom, fabrication lab, dance studio, youth arts education classroom, and two fine arts adult classrooms. We opened our doors with increased capacity, capability, and exciting new programming in a variety of fine art and creative design fields mixing traditional arts with new tools and technology. That fall, the Education Program saw the biggest, most successful, single semester in its history with the highest enrollment in the broadest number of classes and our highest-class capacity ratio! That exciting launch was followed by an equally outstanding Winter 2020 semester, again, the most successful against all measures. After an expanded **February Vacation Week** with an exciting new Performing Arts concentration, Spring 2020 was on track to break even more records when we saw the onset of COVID and took the cautionary measures to halt operations. Once again, we worked quickly and creatively, converting the program to a virtual learning platform, training faculty in online teaching, and retooling operations. **The Umbrella @ Home!** launched in the face of great challenges, enabling us to adapt and continue to meet the needs of our community. And it will ensure our success into the future.

### ARTS & ENVIRONMENT

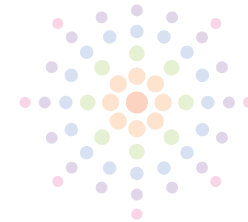
Arts & Environment launched a robust season of programming and found great success in adapting to both virtual platforms and outdoor engagement. Public exhibits encouraged

community members to engage safely with art in person: “**Go Out Doors**,” along the Bruce Freeman Rail Trail encouraged outdoor activity and exploration. Liz Helfer’s “**Voyage of the Yellow Wellies**” was converted to an engaging, interactive website, increasing its accessibility and impact over time and geographic limitations.

Partnerships remain a core part of our outreach and growth, especially at this time. Work with Minute Man National Historical Park (MMNHP) included Nancy Winship Milliken’s **Earth Press Project: Witness**, and the related interactive prompt challenging visitors (to the Park and online) to submit words describing the change they hope to see in the world.

Other collaborations included a joint social media campaign and art challenge with MMNHP, **#ArtistinYourResidence**, and the regionwide “Summer Quest,” a youth summer badge program in partnership with MMNHP, OARS, Drumlin Farm, the Concord Land Conservation Trust, and affiliate partners including Mass Audubon/Drumlin Farm, Trustees of Reservations/The Old Manse, Concord Library, Concord Visitor Center, and ArtsArlington.

A highlight of the season was **Earth Day Reimagined**. In response to the challenges of COVID we converted the exhibition to a virtual installation and the Earth Day celebration events were transformed into “30 Activities (in honor of Musketaquid’s 30th Anniversary) in 50 Days (in honor of the 50th Earth Day Celebration).”



### PERFORMING ARTS

Performing Arts saw nearly 8,000 audience members from the Season Opener in September to the acclaimed regional premiere of **Hundred Days** in February, including several SOLD OUT performances in both the Main Stage and Black Box – our two brand new, state-of-the-art performance venues. **42nd Street** celebrated the newly opened Umbrella Arts Center, hosting nearly 3,500 audience members, the most for any Main Stage production in The Umbrella’s history. The company’s work was recognized with nine Broadway World nominations. And importantly, with our new status as a fully professional Equity house, we provided working opportunities for 60 actors and nearly 75 directors, designers, and technicians. The Umbrella’s theaters also provided space for community events including screenings by the **Concord Film Project**, **The Alexander Children’s Theatre School**, *Songs for a New World* fundraiser for the **Front Porch Collective**, and more. A highlight of the season was our inaugural Concert event on the Main Stage, a performance by music great **Lyle Lovett** who was joined onstage in a surprise visit by rock legend **Steve Miller**.



“:...(a) thunderous opening for The Umbrella Stage Company”  
*Broadway World*

### STUDIO ARTS

The Studio Arts Program continued to support the creativity of more than 60 artists in a variety of media. We welcomed four new regionally acclaimed artists to our community through our residency programs – **Artist-in-Residence** and **Artcubator** – working in painting, digital media, film and installation. We were thrilled to support these artists in creating new bodies of work for exhibitions as far as Portland, ME and Philadelphia, PA. The new **Gallery 3** space in our renovated building allowed a rotating roster of resident “curators” to mount small, informal, experimental shows by community artists at and beyond The Umbrella. We again welcomed over 2,500 members of the public to our festive and celebratory annual **Winter Market**, sharing the work of our studio artists and more. A new **Artist Resource Hour** supported many in navigating COVID-19 programs for artists, helping to secure necessary funds to account for loss of income. During quarantine, our artists continued to gather for virtual critiques and artshares with artists throughout the Concord community.



Winter Market welcomed more than 2,500 community members

### ARTS GALLERY

2019/20 was a year of openings. Bright and bold work by 2018/19 Artist-in-Residence **Nicholas Anthony Mancini** filled our expansive and inviting new gallery space. Families shared stories together surrounded by award winning art during **Story Art: Children’s Book Illustration**. The public came together to hear directly from renowned local illustrators and authors for talks, panels and hands-on programs, presented in collaboration with the Concord Festival of Authors. **A Change in Atmosphere** showcased what the New England region does best in terms of atmospheric firing techniques, a nod to our new ceramics firing capacity and depth of talent in our extended artist community. To close our season, we mounted **Aperture**, our annual Studio Artist Exhibition, along with our annual Earth Month Exhibition, both made available in our first interactive digital gallery online. Our newly activated “Black Box Gallery” hosted bold and socially relevant exhibitions **She4She**, for Heading Home women’s shelter, and **One Day I Will Walk Into The Umbrella**.



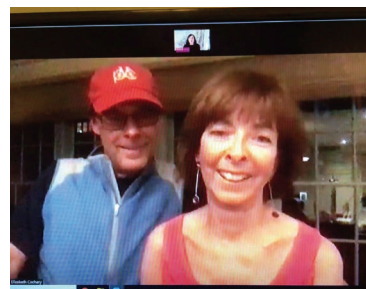
Welcoming almost 5,000 visitors to our new Arts Gallery



# Stand by Me

## A Virtual Evening for the Arts

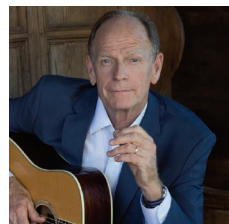
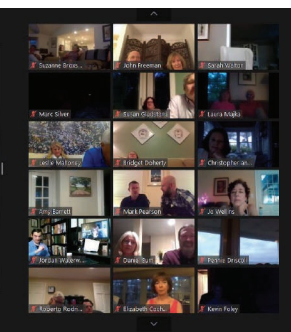
On Friday, May 29, 2020, more than 1,000 households came together through multiple virtual and live-stream platforms to stand by The Umbrella in this challenging year. Under the leadership of Gala Committee Chair Ellen McHale, the event broke records, making Stand By Me our most successful gala ever. Thank you!



Above: Phill and Liz Gross. Below, clockwise from top center: Charles Yang performs, The Umbrella Arts Center lit in celebration, WBUR's Robin Young interviews rock legend Steve Miller for more than 1,000 guests via Zoom, sponsors received exclusive Umbrella Lux Boxes for the celebration

The evening featured a star-studded line-up of Umbrella friends and special guests including (top right to bottom) hosts Joyce Kulhawik and Robin Young along with appearances by Joseph Leo Bwarie, Steve Miller, Ryan Montbleau, Paul Sullivan, Livingston Taylor, and Charles Yang and a surprise appearance by Lyle Lovett.

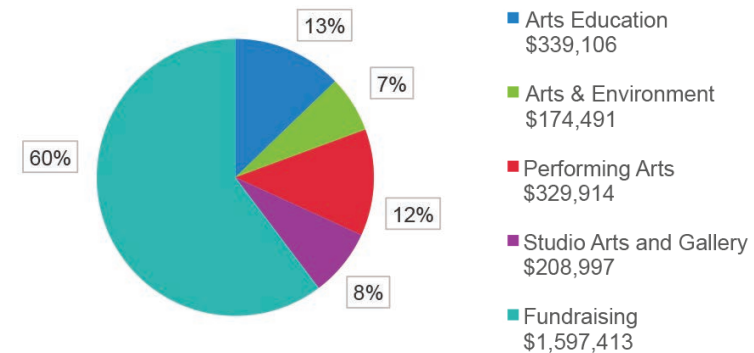
The highlight of the event was the presentation and naming of the Stewardship of the Arts Award in honor of this year's recipient, Liz Gross. Together with her husband Phill, Liz has continued to celebrate her passion for music and art throughout their lives in Boston and Concord, sharing their love of the arts with many Boston area youth organizations. Liz has served on The Umbrella's Board for 13 years and as Campaign Chair, worked tirelessly with staff and volunteers to create a beautiful, state-of-the-art center of arts and culture. Liz continues to be an integral part of The Umbrella team and is the organization's most enthusiastic advocate.



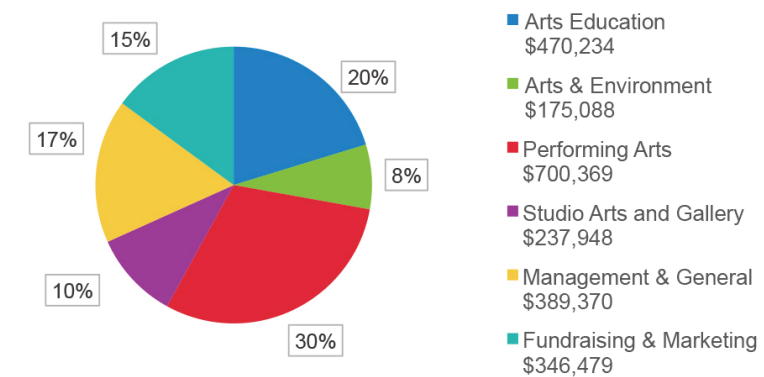
## THE UMBRELLA FY20 FINANCIALS

CHANGES IN NET ASSETS	2020	2019
REVENUES		
Operating Revenue	903,067	512,891
Support Revenue (includes Campaign)	2,609,684	1,961,377
Investment Income	13,603	42,425
<b>TOTAL REVENUE</b>	<b>\$ 3,526,354</b>	<b>\$ 2,516,693</b>
EXPENSES		
Program Expenses	1,932,398	878,387
Supporting & Administrative Expenses	786,581	835,328
<b>TOTAL EXPENSES</b>	<b>\$ 2,718,979</b>	<b>\$ 1,713,715</b>
<b>Increase (Decrease) in Net Assets</b>	<b>807,375</b>	<b>802,978</b>
<b>Non-Operating Loss on Disposal of Fixed Assets</b>	<b>0</b>	<b>-278,403</b>
<b>Net Assets at the beginning of the year</b>	<b>18,010,681</b>	<b>17,486,106</b>
<b>Net Assets at the end of the year</b>	<b>\$18,818,056</b>	<b>\$18,010,681</b>

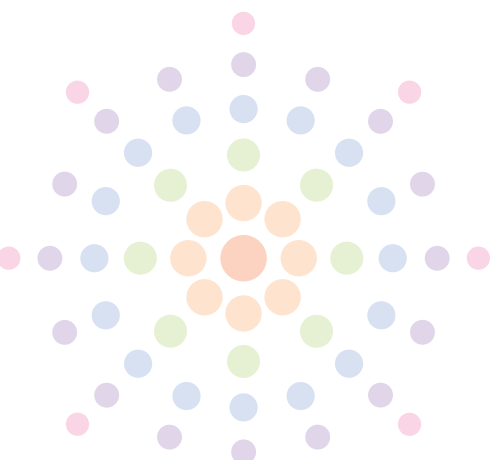
### FY20 TOTAL OPERATING REVENUE CONTRIBUTED & EARNED = \$2,649,921



### FY19 TOTAL OPERATING EXPENSES NOT INCLUDING DEPRECIATION = \$2,319,488



Footnote: The above information provides an overview of The Umbrella's finances for FY20. Please note that the net asset table is reflective of the comprehensive audited financials including Campaign revenue and depreciation while the pie graphs below are an illustration of operating revenue and expenses only.





# THANK YOU!

We gratefully acknowledge the following individuals, corporations, foundations, organizations, and government agencies for supporting our efforts to enrich lives and build a vibrant community through the arts. Your generosity and goodwill provided critical support for The Umbrella Arts Center.

*The following supporters provided operating and restricted program support for The Umbrella Arts Center's Annual Fund. This list includes charitable gifts and pledges between July 1, 2019 and June 30, 2020.*

## \$100,000+

Elizabeth and Phillip Gross  
Laura and Robert Reynolds

## \$50,000-\$99,999

MassDevelopment  
The Connors Family

## \$25,000-\$49,999

Adage Capital Management, L.P.  
Anonymous  
Bob and Michelle Atchinson  
Gail and Matt Burr  
Kevin Foley and Leah Flanigan  
Connie and Barry Hershey  
Matthew and Stephanie Magee  
Demond and Kia Martin  
Jennifer and Wilson Schünemann  
Xeric Foundation

## \$10,000-\$24,999

Anonymous (2)  
Joshua and Anita Bekenstein  
Dennis and Kim Burns  
Richard and Ann Marie Connolly  
Michael and Barbara Eisenson  
Foundation for MetroWest  
John and Joan Freeman  
John S. and James L. Knight  
Foundation  
Massachusetts Cultural Council  
The Boston Foundation  
Nancy Traversy and Martin Lueck

## \$5,000-\$9,999

Andrea Brox and John McCarthy  
Dinah Buechner-Vischer  
Charles and Gloria Clough  
Marjorie Findlay and Geoff Freeman  
Ed Kane and Marty Wallace  
Ellen and William McHale  
Neil Rasmussen and  
Anna Winter Rasmussen  
Kate and Mark Reid  
Michael and Sarah Rodgers  
Salem Five - Concord  
Kiki and Drew Shilling  
Gary Vilchick and Elaine Labrecque

## \$2,500-\$4,999

Gretchen Anderegg  
Jennifer and Beau Coash  
Cynthia and Bryon Deysher  
Cathy and Fritz Folts  
Sandy and Robert Freund

Friends of the Bruce Freeman Rail Trail  
Frank Hill and Cynthia First  
Jon and Cathy Jenkins  
Jonathan Keyes  
Libby Kurten and Viktor Vejins  
LandVest, Inc.  
Nancy and Phil Lotane  
Tom Martin and Martha Davis  
Jane Mendillo and Ralph Earle  
Nashoba Brooks School  
Jeff and Sarah Newton  
Susan and Steve Pollock  
Tufts University and its Friedman  
School of Nutrition Science and Policy  
Paul and Wilhelmina van der Wansem  
Jerry and Carole Wedge  
Deborah Yamin

## \$1,000-\$2,499

Jeff and Andrea Adams  
Susan and Christopher Amorello  
Anonymous (2)  
Arbella Insurance Foundation Inc.  
Bank of America Private Bank  
Amy and Bill Barrett  
Suzanne and Mike Broxson  
Bettina and Craig Burr  
Casey Carlson and Bill Stone  
Kate and Robert Chartener  
Jack and Di Clymer  
David Douglas and Pamela Gannon  
Emerson Hospital  
Vicki and Tom Evarts  
Fiorella's Cucina - Concord  
Carrie Flood  
Megan Gadd and Nathan Wilson  
Beth Garvin  
Sue Gladstone and Dave DeLong  
Goldman, Sachs & Co.  
Andrew and Patricia Goldstein  
Kevin and Gunilla Gorman  
Leann and Paul Griesinger  
Lindsey and Zack Gund  
Julie and Cary Hagan  
Mary Ellen and Michael Harney  
Lonnie Harvey and Jonathan Moore  
Jeannette O'Neill Memorial Fund  
Ann Jennings  
Allene and Fritz Kussin  
Nancy Nelson and Michael Lawson  
Sarah and Robert Le Roy  
Dan and Lisa Lehan  
Susanne and Karl Liebich  
Jean and Alan Lightman  
Deborah and Richard Loverd

William T. Loverd Estate  
Mike and Robin Malouf  
Sheilah and Mike McCauley  
Laura McGaha  
Chris Mokal and Gilles Quintal  
Middlesex Savings Bank  
Sarajane Mullins  
John Muresianu and Patti Satterthwaite  
NorthBridge Insurance Agency, Inc.  
Judy Perkins  
Jo and JP Poole  
Rebecca Purcell  
Tom and Donna Quirk  
Jim Richardson and Susan Lynch  
River Stewardship Council/Wild and  
Scenic Rivers Community Fund  
Robert and Colleen Robillard  
Rosse Family Charitable Foundation  
Wade Rubinstein and Jill Block  
Debra Rutter  
Sharpe Family Foundation  
Melinda and John Shumway  
Marc Silver and Jill Appel  
Sorrento's Brick Oven Pizza  
Carolyn and Eric Stein  
Jennifer and Steven Stone  
Mimsey and Charles Stromeyer  
Judith and Daniel Sum  
The Concord Cheese Shop  
The Diomedes Foundation  
Charity and Thomas Tremblay  
Vertex  
Joe Wallace and Liz Chang  
Malcolm Walsh and Kathleen O'Hara  
West Concord Liquors  
Barbara and James Willis  
Sara Wilson and Emanuele Angelino  
Woods Hill Table

## \$500-\$999

Christine Anderson  
Nancy and Neil Arkuss  
Liz Awalt and John Conley  
Baker-Root Family Foundation  
Robert and Katherine Beede  
Adam Broun and  
Anne MacDonald-Broun  
Lander Burr  
Jeff and Ellen Campbell  
Felice and Leland Cott  
Warren Covert and Mary Fenoglio  
Todd and Caroline Crocker  
Ronald and Holly Darzen  
Carolyn Davies  
Debra's Natural Gourmet

Emily and Scott Dresser  
Jennifer Engel  
Charles Foley  
Kate and Rob Galusza  
Doug Girdwood and Susan MacDonald  
Fawn Hardison and David Mayer  
Mike and Laura Harer  
Dale Hedberg  
Margot Kimball and Matt Johnson  
Jack and Cynthia LaMothe  
Sarah and Kenneth Lazarus  
Caroline Lindeke  
Natacha Liuzzi  
Jodi and Mark Loughlin  
Ron and Laura Majka  
Jeanne Markel and Chris Wedge  
Jack and Melissa McBride  
Anmol Mehra  
Fumihiko Moriya  
Wendy and William Page  
Michael Pattison  
Jan Perry and Paul Landrey  
Bette Pounders  
Dawn Rennert  
Deborah Richardson and  
Mark DelGuidice  
William Sabine and Melita Teichert  
Susannah Sheppard  
Adam and Amy Simon  
Edward Sonn  
Victoria Staebler  
Terri Stuler  
Priscilla and Howard Sturges  
Hilary Taylor  
Susan and Malcolm Ticknor  
Abby Turk  
Glen and Andrea Urban  
Waters Corporation  
Valerie Wedge and Barent Walsh  
Brenda White  
Lissa and Carter Winstanley  
Woodman & Eaton, P.C.

Emily and Scott Dresser  
Jennifer Engel  
Charles Foley  
Kate and Rob Galusza  
Doug Girdwood and Susan MacDonald  
Fawn Hardison and David Mayer  
Mike and Laura Harer  
Dale Hedberg  
Margot Kimball and Matt Johnson  
Jack and Cynthia LaMothe  
Sarah and Kenneth Lazarus  
Caroline Lindeke  
Natacha Liuzzi  
Jodi and Mark Loughlin  
Ron and Laura Majka  
Jeanne Markel and Chris Wedge  
Jack and Melissa McBride  
Anmol Mehra  
Fumihiko Moriya  
Wendy and William Page  
Michael Pattison  
Jan Perry and Paul Landrey  
Bette Pounders  
Dawn Rennert  
Deborah Richardson and  
Mark DelGuidice  
William Sabine and Melita Teichert  
Susannah Sheppard  
Adam and Amy Simon  
Edward Sonn  
Victoria Staebler  
Terri Stuler  
Priscilla and Howard Sturges  
Hilary Taylor  
Susan and Malcolm Ticknor  
Abby Turk  
Glen and Andrea Urban  
Waters Corporation  
Valerie Wedge and Barent Walsh  
Brenda White  
Lissa and Carter Winstanley  
Woodman & Eaton, P.C.

Emily and Scott Dresser  
Jennifer Engel  
Charles Foley  
Kate and Rob Galusza  
Doug Girdwood and Susan MacDonald  
Fawn Hardison and David Mayer  
Mike and Laura Harer  
Dale Hedberg  
Margot Kimball and Matt Johnson  
Jack and Cynthia LaMothe  
Sarah and Kenneth Lazarus  
Caroline Lindeke  
Natacha Liuzzi  
Jodi and Mark Loughlin  
Ron and Laura Majka  
Jeanne Markel and Chris Wedge  
Jack and Melissa McBride  
Anmol Mehra  
Fumihiko Moriya  
Wendy and William Page  
Michael Pattison  
Jan Perry and Paul Landrey  
Bette Pounders  
Dawn Rennert  
Deborah Richardson and  
Mark DelGuidice  
William Sabine and Melita Teichert  
Susannah Sheppard  
Adam and Amy Simon  
Edward Sonn  
Victoria Staebler  
Terri Stuler  
Priscilla and Howard Sturges  
Hilary Taylor  
Susan and Malcolm Ticknor  
Abby Turk  
Glen and Andrea Urban  
Waters Corporation  
Valerie Wedge and Barent Walsh  
Brenda White  
Lissa and Carter Winstanley  
Woodman & Eaton, P.C.

## \$250-\$499

Shannon Ames  
Ann and John Ballantine  
Bank of America  
Bonnie Berman  
Timothy Blodgett  
Bright Funds - VMWare Foundation  
Pierce and Elise Browne  
John Cochary  
Nancy Curran Willis and Bill Willis  
Laura and Jim Davidian  
Anne Denna  
James and Catherine Elgin  
Michael Ferrand  
Tally Forbes  
Kevin Franck  
Gerald and Cynthia Frenkil  
Josh and Mala Galper  
Ilene Gipson  
Kate and Gil Grandbois  
Maria Gutierrez  
H. Ivan Orup, Jr., DMD, MMSc, PC  
Merewyn Harrington  
Diane Harwood  
Jaimee and Tim Healy

Andrea and Brad Hubbard-Nelson  
Lauren and Bill Huyett  
Eve and Thomas Isenberg  
Mary Anne and Jim Jasinski  
Diana Jong  
Katrina Kelner and Norm Hershkowitz  
Carolyn King and Thomas Tarpey  
Michael and Claire King  
Sarah and Karl Kussin  
Holly Legault  
Mark and Jessica Lewand  
Longwood Software, Inc.  
Ken Majka  
Ron Mann  
Elisabeth and Simon Martin  
Jane and Timothy McHale  
Virginia McIntyre and John Stevens  
Fatima Muniaian  
Daniel O'Connor  
Melanie O'Hare  
Katherine Page  
Chris and Deedo Painter  
Linda and Whitfield Painter  
Pierre Chiha Photographers  
Marie-Louise and John Petrie  
Mathias Rosenfeld and Courtney Queen  
Robert and Wendy Reasenberg  
Timothy and Abbey Redmond  
Chris and Sue Regan  
Kate Renyi  
Lydia Rheinfrank and Kyle Rusconi  
Roberto Rodriguez  
Thomas and Mimi Rutledge  
Peter and Suzanne Steffens  
Nan Stutz  
Linda and John Sweeney  
Brian and Maryrose Sykes  
Valerie and Harvey Thayer  
Christopher and Nancy Thomas  
Thompson Wealth Management  
Claudia and Andrew Veitch  
Kathy and David Warren  
Frances Webb  
Sven Weber  
Cara Williams  
Katherine and David Wilson  
Russell Wolf and Martha Gilpatrick  
Elise and Alan Woodward  
RJ Yamartino

Andrea and Brad Hubbard-Nelson  
Lauren and Bill Huyett  
Eve and Thomas Isenberg  
Mary Anne and Jim Jasinski  
Diana Jong  
Katrina Kelner and Norm Hershkowitz  
Carolyn King and Thomas Tarpey  
Michael and Claire King  
Sarah and Karl Kussin  
Holly Legault  
Mark and Jessica Lewand  
Longwood Software, Inc.  
Ken Majka  
Ron Mann  
Elisabeth and Simon Martin  
Jane and Timothy McHale  
Virginia McIntyre and John Stevens  
Fatima Muniaian  
Daniel O'Connor  
Melanie O'Hare  
Katherine Page  
Chris and Deedo Painter  
Linda and Whitfield Painter  
Pierre Chiha Photographers  
Marie-Louise and John Petrie  
Mathias Rosenfeld and Courtney Queen  
Robert and Wendy Reasenberg  
Timothy and Abbey Redmond  
Chris and Sue Regan  
Kate Renyi  
Lydia Rheinfrank and Kyle Rusconi  
Roberto Rodriguez  
Thomas and Mimi Rutledge  
Peter and Suzanne Steffens  
Nan Stutz  
Linda and John Sweeney  
Brian and Maryrose Sykes  
Valerie and Harvey Thayer  
Christopher and Nancy Thomas  
Thompson Wealth Management  
Claudia and Andrew Veitch  
Kathy and David Warren  
Frances Webb  
Sven Weber  
Cara Williams  
Katherine and David Wilson  
Russell Wolf and Martha Gilpatrick  
Elise and Alan Woodward  
RJ Yamartino

Andrea and Brad Hubbard-Nelson  
Lauren and Bill Huyett  
Eve and Thomas Isenberg  
Mary Anne and Jim Jasinski  
Diana Jong  
Katrina Kelner and Norm Hershkowitz  
Carolyn King and Thomas Tarpey  
Michael and Claire King  
Sarah and Karl Kussin  
Holly Legault  
Mark and Jessica Lewand  
Longwood Software, Inc.  
Ken Majka  
Ron Mann  
Elisabeth and Simon Martin  
Jane and Timothy McHale  
Virginia McIntyre and John Stevens  
Fatima Muniaian  
Daniel O'Connor  
Melanie O'Hare  
Katherine Page  
Chris and Deedo Painter  
Linda and Whitfield Painter  
Pierre Chiha Photographers  
Marie-Louise and John Petrie  
Mathias Rosenfeld and Courtney Queen  
Robert and Wendy Reasenberg  
Timothy and Abbey Redmond  
Chris and Sue Regan  
Kate Renyi  
Lydia Rheinfrank and Kyle Rusconi  
Roberto Rodriguez  
Thomas and Mimi Rutledge  
Peter and Suzanne Steffens  
Nan Stutz  
Linda and John Sweeney  
Brian and Maryrose Sykes  
Valerie and Harvey Thayer  
Christopher and Nancy Thomas  
Thompson Wealth Management  
Claudia and Andrew Veitch  
Kathy and David Warren  
Frances Webb  
Sven Weber  
Cara Williams  
Katherine and David Wilson  
Russell Wolf and Martha Gilpatrick  
Elise and Alan Woodward  
RJ Yamartino

## \$100-\$249

Anonymous (2)  
Carol Addy  
Ambar Ahmed  
Margery Ansara  
Louise Arnold and Niall Kirkwood  
AstraZeneca  
Melanie Ata  
Susan Wentworth Austin  
Mary Chris Bassman  
Susan Bates  
David Berti  
Janette Blackburn  
Shirley and Timothy Blancke  
Elaine Borgen  
Nancy Brown and George Koslosky  
Jennifer Bubriski  
Carolyn Bunch

Sarah Campbell  
Kathleen Cappellano  
Paula Casey  
Richard and Kathleen Chick  
Katie and Charlie Cimet  
Leonard and Ann Marie Cimet  
George and Ann Colony  
Megan and John Connor  
Madeleine Corson  
Carol Cox  
John and Holly Cratsley  
Jean D'Amico  
Patricia Deleeuw  
Lisa Derosa  
Patty and Jeff Doherty  
Jan Durgin and Charles Schwager  
Jeff and Molly Eberle  
Jerrell and Molly Engermann  
Richard Fahlander and Kathy Allen  
Amy Fennick  
Joan and John Ferguson  
Ramona Fillipi  
Ken and Shukti Fischl  
Francis Fornaro  
Edward and Sophia Garmey  
Wayne and Susan Geehan  
Curtis and Natalie Gekle  
Gisela Girard  
Lynne and Alexis Goltra  
Goth-Ick Productions  
Phee Grandbois  
Aliisa Gray  
Elizabeth and Henry Haff  
Susan Halby  
Dorothy Harris  
William and Angela Healy  
Suzanne Hill and Raymond Offenheiser  
Sarah Hindle  
Linda Hoffman  
Mary Hull  
Mara Huston  
Lois Hutchings  
Daniel Itzkovitz  
J. McLaughlin  
Radha Jalan  
Denise and Peter Jantzen  
Richard and Louise Johnson  
Kassandra Jolley  
Elissa Jordan  
Kate and Peter Kaplan  
Mary and Robert Kemp  
Jill Knowles  
Stephanie and Russell Kramp  
Bonnie Krims  
Jennifer Kunin  
Kathleen Ladd  
Mary Jo Libertino  
Fred Lindgren  
Kimberly Lindlau-Coen  
Emily and Sam Lines  
Jesse and Lynne Lipcon  
Nancy and Paul Lippe  
Barbara Losier  
Mary Lou and Paul Lovecchio  
Meagan MacNutt  
Marlene Mandel  
Joan Mansfield  
Paul Marchesiani

Tara and Ian Martin  
Maureen Master  
Louisa Mattson  
James McGregor  
Janet and Robert Mendelsohn  
Don Miller  
Laura Mills and Thomas Sablak  
Julia Miner and John Caldwell  
Sherry Mobley  
Bill and Sara Mrachek  
Karen Muise  
myfirstspanish.org  
Sarah O'Neil  
Andy and Linda Hammett Ory  
Sally Ourieff  
Hytho Pantazelos  
Jack Paradise  
Bridget and Matteo Paris  
Carole and Wayne Parrish  
Robert Pascucci  
Louisa and Robert Paushter  
Raymond and Sheila Pavlik  
Ed and Katy Pearson  
Gordon and Pamela Pettengill  
Timothea Pham  
Kevin Thomas Plodzick  
Jo and Doug Powell  
Janet Power and Peter Nobile  
Melissa and Dan Price  
Mary Rauscher  
Brooke and Patrick Redmond  
Cathie Regan  
Kim Reid  
Kathleen and Conan Reidy  
Pamela Remler  
Joseph Richard  
Donald Rosato  
David Rosenbaum  
James and Roseanne Saalfeld  
Samolyk  
Sylvia Sawyer  
Kristen Scopinich and Joshua Burgel  
Karl Seidman  
Lori Shaer  
Kathryn Shane  
Mardy Shapland  
Carolyn Shaughnessy  
Joy and Gordon Shaw, Jr.  
Cheryl Shea  
Sergio Siani  
Goody Sinclair  
Lyell Slade  
Sandra Small  
James Smith  
Samantha St. Laurent  
Martha Stearns  
Stephanie Stillman  
Yumi Suarez  
Catherine Svrcek  
Parker and Midge Symmes  
Xiquan Tang  
Tony Williams Dance Center  
Henry and Janet Vaillant  
Jay and Stephanie Vogt  
Kathleen Walton  
Jennifer Wells  
Barbara Wheeler  
Emily Wheeler

Eileen Nugent Williston and  
James Williston  
A G Wine  
Tracy Winn  
Louisa and Richard Yamartino

## UP TO \$99

Jeannie Abbott  
Sally Abend  
Elisa Adams  
Randi Alterman  
AmazonSmile Foundation  
Lois Andersen  
Lisa Atkinson  
Renata Aylward  
Allyson and Tucker Bailey  
Brian Balduzzi, Esq.  
Lara Finn Banister  
Sibylle Barlow  
Harry Bartlett  
Michael Beer  
Lauren Beresford  
Burke and Jo Bero  
Richard Bertin  
Jessica Betts  
Robert Bicknell  
Bisby Charitable Fund  
Kristen Bock  
Nancy Bond  
Brian Boruta  
Patricia Bothe  
John Brady  
Martha Brill  
Elisabeth Burdick  
Charlene Burstad  
Joseph Cahill  
Joan Campbell  
Sophie Carlhian  
Margaret Carroll  
Sheila Carruth  
Kai Chao  
Pierre Chiha  
Thalia Cocconi  
Jane Conlin  
Kate Connolly  
Thomas Cooper  
Colleen Cox  
Kyle Crand  
Hope Crocker Stango  
Elizabeth Crowley  
Deborah Cutler-Ortiz  
April Cyr  
Kristina Dakos  
Maria Day  
Matthew Day  
Todd De Binder  
Geraldine Degurski  
Jocelyn Delaney  
Dell  
Amy DeMarco  
Maureen and Tim Dibble  
Heather Dibenedetto  
Bridget Doherty  
Eugene Doherty  
Masha Doohovskoy  
Gordon Edes  
Caroline Ellis  
Jeanne Emanuel

Peter and Sarah Farrow  
Leslie Feigh  
Chantel Feola  
Maureen Festa  
Marc Fields  
First Church of Christ, Scientist  
Laurie Foster and Edward Goggin  
Gavin Fraser  
Elizabeth and Nordel Gagnon  
Amanda and Ian Gardiner  
Michael and Nancy Geis  
Susan Giebutowski  
Linda Gillespie  
Darwin and Kristen Gillett  
Cynthia Godin  
Sheila Goldberg  
Larry and Amy Gordon  
Peggy Greenough and Joel Johnson  
Lynn Gudmand  
Brad Guth  
Mary Jane Hall  
Christiane Hamilton  
Gail Handelmann  
Rebecca Harris  
Kevin Harris  
Mary and Robert Hartman, Jr.  
Rachel Healy  
Jane Hogan  
Barbara Hogan  
David Horlacher  
Vivian Howell  
William Huber  
Joel and Sally Hughes  
Jean Husson  
Stewart Ikeda  
Susan Jacoby  
Ron and Denis Jenssen  
Wayne and Virginia Johnson  
Susanna Kamon  
Jessica Kaplan  
James Kappel  
Diana Kelly  
Lindsay Kenney  
Paul Kirshen and Bettina Burbank  
Gail Leftwich Kitch  
Melody and Todd Kokoszka  
Richard Kopcke  
Nicholas Krasin  
Jennifer Krasin  
Rebecca Krasner  
Carol and Richard Kyte  
Lynne Lamb  
Lynne Laspina  
Lydia Lauderdale  
Robert and Janet Lawson  
Allison Leake  
Denise LeBlanc  
Caroline Leggett  
Craig Lemberger  
Laura Levan  
Catherine Levesque  
David Lewis  
Kathryn Liebowitz  
Sarah Lilley  
Sherry Litwack  
Shayna Loeffler  
Nancy Lyons  
Dorothy Mackeen

Anne Makepeace  
Vernon Marchal  
Margaret Marsh  
Charles Mascott  
Lorraine Mastropieri  
Kristin McCullar  
McGregor & Legere, P.C.  
Stephanie Mckay  
John McWalter  
Susanne and Mark Meterko  
Susan Mills  
Kathleen Mills  
Brian Montoya  
Vanessa Moroney  
Jessica Muise  
Benjamin Neil  
Pat and Peter Nelson  
David Nerrow and Monique Medici  
Nick and Ann Noyes  
Carrie O'Brien  
Jillian O'Connell  
Cindy Orcutt  
Ji Orloff  
Overbridge Arts  
Michael Paladini  
Henry Park  
Barbara Paugh  
Louis Peitzman  
Joan Perera  
Kathleen Perry  
John Pestana  
William and Jennifer Petersen  
Constance Phillips  
Brijmohan Phull  
Suzanne and David Picher  
Ilse Plume  
Nancy Powell-Daley  
Karen Prince  
Phyllis Proctor  
Carmi Punzalan  
Raffaele's Barber Shop  
Judith Remondi  
Jon and Margaret Richardson  
Catherine Ritz  
Maximino Rivera  
Maria Duaine Robinson  
Pauline Robitaille  
Candace and Matthew Root  
Tamara Rose  
Phyllis Ross  
Dawn Ryan  
Chris Saia  
Nicole Saia  
Holly and Louis Salemy  
Kimberly Sanderson  
Alejandra Santos Nieto  
Lynn Scarborough  
Cordula Schwarz  
Judith and John Scotnicki, Jr.  
Katherine Scott  
Tristyn Sepersky  
Sarah Shamel  
Elaine Shea  
Barbara Simon  
Robin Slonim  
Laura Snowden  
Jason and Robin Springer  
Emily and Dana Sprong



Peter and Anne Standish  
Irene Stapleford  
George Stewart and Alexandra Turner  
Leslie Stonestreet  
Maryann and Jeff Street  
Elizabeth Stubbs  
Marian Sutherland  
Janey Tallarida  
Vivien Tao  
James and Cindy Tenner  
Kevin Thomas  
Richard Thornton  
Alexandra Turner  
UBS, Inc.  
Anne and Bill Umphrey  
Jennifer Valentine  
Tobi and Keith VanOrden  
Sophia Wadsworth and Bruce Morgan  
Charlotte Wallace  
Roxie Walsh  
Maria Wardwell  
Leigh Weaver  
Ann Webster  
Cathi Webster  
Elizabeth and Dave Wei  
Robert Weiner  
Andrew and Stephanie Weinert  
Mark Weltner and Sandy Crawford  
Mary Will  
William and Sally Williams  
Carol and Christopher Wilson  
Kenneth Wilson and Linda Hardiman  
Tom Wilson and Martha Soper  
Caroline Woodward  
Dana Yalin  
Valerie Young  
Chuqian Yuan  
David and Miriam Zarchan  
Sarah Zimmerman

**In Honor Of/In Memory Of**

In honor of Liz Gross  
In honor of Liz and Phill Gross  
In memory of Joe and Ruth Cahill  
In memory of Hal Dirik  
In memory of Allie Kussin  
In memory of Thomas J. Lacey  
In memory of Joan Leftwich  
In memory of Michael Leland  
In memory of Susan Winsby  
In appreciation/honor of Kat O'Connor  
In appreciation of Nancy and Charles Dee

*We make every effort to be as accurate and complete as possible in compiling our lists. To notify us of an error, please contact the Development office at 978.371.0820 x201 and accept our sincere apologies.*

**BUILDING THE ARTS CAPITAL CAMPAIGN SUPPORTERS**

*The following is a list of supporters for The Umbrella Arts Center's Capital Campaign: Building the Arts. This list includes charitable gifts and pledges made to the Campaign before July 1, 2020.*

**\$1M+**

Anonymous (3)  
The Phillip and Elizabeth Gross Family Foundation

**\$100,000-\$1M**

Anonymous (3)  
Dennis and Kim Burns  
Richard and Maria Churchill  
Commonwealth of Massachusetts\*  
Community Preservation Committee  
Ann Marie and Richard Connolly  
Cynthia and Bryon Deysher  
Diomedes Foundation  
Hershey Family Foundation  
Edward W. Kane and Martha J. Wallace  
The Manton Foundation  
Sharpe Family Foundation  
Town of Concord Community Preservation Fund

**\$50,000-\$99,999**

Barefoot Books: Nancy Traversy and Martin Lueck  
Gail and Matt Burr  
Gloria and Chuck Clough, Jr.  
Leah Flanigan and Kevin Foley  
Jeff and Sarah Newton

**\$25,000-\$49,999**

Di and Jack Clymer  
Charlie and Francie Crowley  
Fritz and Cathy Folts  
Joan and John Freeman  
Pete Funkhouser and Kate Stout  
Frank Hill and Cynthia First  
Judith Perkins  
Wade Rubinstein and Jill Block

**\$10,000-\$24,999**

Anonymous (1)  
Dinah Buechner-Vischer  
Sue Gladstone and Dave DeLong  
Andrew and Patricia Goldstein  
Sandra Henderson  
John S. and James L. Knight Foundation  
Carol Krauss  
Allie and Fritz Kussin  
Ellen and Bill McHale  
Charlie and Nancy Morrison  
Barbara Powell and Halley McIlwain  
Holly and Louis Salemy  
Tom and Charity Tremblay

Paul and Wilhelmina van der Wansem  
Jerry and Carole Wedge

**Up to \$10,000**

Jeff and Andrea Adams  
Anonymous (2)  
Arbella Insurance Foundation, Inc.  
Beth and Jamie Athanasoulas  
Amy Barrett  
Rosemary and Peter Burke  
Kayo and David Burmon  
Tete Cobblah and Elizabeth Updike Cobblah  
Anne Denna  
Dave Douglas and Pamela Gannon  
Natalie Gardner  
Lucy Goldstein and Derek Cobbe  
Deanna and Robert Hargraves  
Harvard Pilgrim Health Care  
Ilene and Richard Jacobs  
Robert and Sarah Le Roy  
Betsy Levinson  
Jean and Alan Lightman  
Peter Lovis  
Leslie and Paul Mahoney  
John McCarthy and Andrea Brox  
Kate and Mark Reid  
Kathy Reticker and Jack Flynn  
Debra Rutter  
Jennifer and Wilson Schünemann  
Marc Silver  
Carolyn and Eric Stein  
Jeffrey and Maryann Street  
Hilary Taylor  
Harvey and Valerie Thayer  
William Turville  
Kathy and David Warren  
Anthony Williams  
Barbara and Jim Willis  
Carol Wilson  
Deborah Yamin

*\* Funding has also been provided by Executive Office of Housing and Economic Development, MassDevelopment and the Collaborative Workspace Grant Program; and the Massachusetts Cultural Facilities Fund, a program of the Commonwealth of Massachusetts, administered through a collaborative arrangement between MassDevelopment and the Mass Cultural Council.*



**2020 STAND BY ME GALA SPONSORS**

**LEGENDARY**

Adage Capital Management  
Bob and Laura Reynolds

**LUMINARY**

The Connors Family  
Kevin Foley and Leah Flanigan

**VISIONARY**

Bob and Mickey Atchinson  
Liz and Phill Gross  
Matt and Stephanie Magee  
Kia and Demond Martin

**CHAMPION**

Anonymous  
Josh and Anita Bekenstein  
Kim and Dennis Burns  
Matt and Gail Burr  
Richard and Ann Marie Connolly  
Discover Concord  
Michael and Barbara Eisenson  
Gregory Maguire and Andy Newman  
The Boston Foundation  
Nancy Traversy and Martin Lueck

**LEADER**

Gloria and Chuck Clough  
Dinah Buechner-Vischer  
Ellen and Bill McHale  
Kate and Mark Reid  
Mick and Sarah Rodgers  
Salem Five  
Kiki and Drew Shilling

**AMBASSADOR**

Gretchen Anderegge  
Bryon and Cynthia Deysher  
Ralph Earle and Jane Mendillo  
Joan and John Freeman  
Frank Hill and Cynthia First  
Cathy and Jon Jenkins  
LandVest  
Phil and Nancy Lotane  
Nashoba Brooks School  
Sarah and Jeff Newton  
Steve and Susan Pollock  
Jennifer and Wilson Schünemann

Priscilla White Sturges,  
Waterman Design  
Tufts University and its Friedman School of Nutrition Science and Policy  
Gary Vilchick and Elaine Labrecque  
Jerry and Carole Wedge  
Deborah Yamin

**PARTNER**

Acqua Sotto  
Chris and Susan Amorello  
Amy Barrett  
Bank of America Private Bank  
Jill Block and Wade Rubinstein  
Bettina Burr  
The Cheese Shop  
Jack and Di Clymer  
David Douglas and Pamela Gannon  
Emerson Hospital  
Vicki Evarts  
Elizabeth Garvin Consulting  
Sue Gladstone and Dave DeLong  
Andrew and Pat Goldstein  
Zack and Lindsey Gund  
Julie and Cary Hagan  
Mary Ellen and Mike Harney  
Robert and Sarah Le Roy  
Susanne and Karl Liebich  
Jean and Alan Lightman  
Robin and Mike Malouf  
Tom Martin and Martha Davis  
Sheilah and Mike McCauley  
Chris Mekal and Gilles Quintal  
Jo and JP Poole  
Rebecca Purcell  
Donna and Tom Quirk  
Robert Robillard  
Rockler Woodworking and Hardware, Cambridge  
Debra Rutter  
Melinda and John Shumway  
Sorrento's Brick Oven Pizzeria  
Carolyn and Eric Stein  
Steven and Jennifer Stone  
Charity and Thomas Tremblay  
Vertex  
Joe Wallace and Liz Chang



**OUR VOLUNTEERS**

Over 300 volunteers from early teen and up bring their skills to The Umbrella. Some volunteer for a one-time event while others stay for years. It has been a time of ingenious volunteerism, making Umbrella themed face masks; a tree-climber who helped to install part of this year's Art Ramble; and photographers who documented the "Go Out Doors" exhibit on the Bruce Freeman Rail Trail – projects that have had an essential impact and have kept community spirits high. We are grateful for their many contributions.



Recognized as  
Leaders in Youth Arts  
Education: The Umbrella  
Arts Education has been  
recognized as the #1  
Regional Reader's Choice  
Winner for Summer  
Camps!



Recognized as  
Regional Leaders in  
Development of Virtual  
Programming WBUR  
Spotlight of organizations  
"Making It Work"

