

THE UMBRELLA<sup>SM</sup>  
STAGE COMPANY

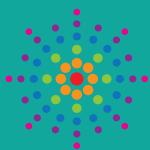
*Dracula*

A feminist  
revenge fantasy

*really*

2022-2023 SEASON

40 STOW STREET, CONCORD, MA | [TheUmbrellaStage.org](http://TheUmbrellaStage.org)



# THE UMBRELLA ARTS CENTER 2022/2023 40TH ANNIVERSARY SEASON

**PRESENT**

How  
do you  
measure  
a year in  
a life?

Book,  
music, &  
lyrics by  
Jonathan  
Larson



**NOV 11  
- DEC 4**

[theumbrellaarts.org](http://theumbrellaarts.org)

## MORE AT THE UMBRELLA THIS FALL!



Fall Semester  
Youth & Adult  
Classes

## FREE FAMILY FRIENDLY EVENTS

### ART RAMBLE | NOW THROUGH NOVEMBER 13

Hapgood Wright Town Forest.

### GO OUT DOORS | NOW THROUGH NOVEMBER 15

Public installations. Location and map information online.

### ARE WE HOME YET? | OCTOBER 6 - NOVEMBER 12

The Umbrella Main Gallery. Free.



## FAMILY WORKSHOPS and DROP-IN ARTS at The Umbrella

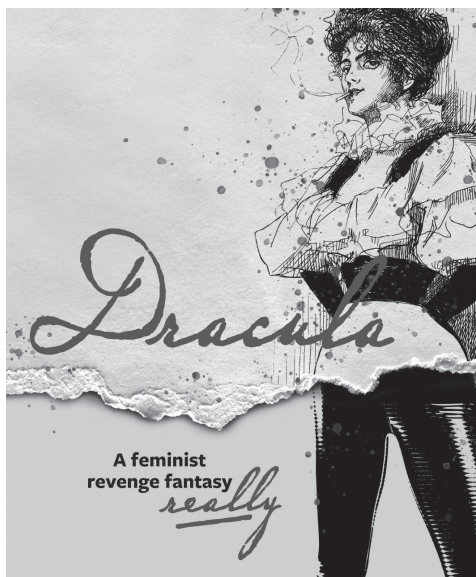


THE UMBRELLA  
ARTS CENTER

[THEUMBRELLAARTS.ORG](http://THEUMBRELLAARTS.ORG)



## THE UMBRELLA STAGE COMPANY PRESENTS



Based on the novel by Bram Stoker

By Kate Hamill

Directed by Michelle Aguillon

Original Music Composed by  
Valerie Forgione

Stage Managed by  
Sydney Boncoddò

Assistant Stage Managed by  
Johnny Penney and Jingwen Zhang

Scenic Design by  
Melody Hsu

Lighting Design by  
SeifAllah Sallotto-Cristobal

Sound Design by  
James Cannon

Costume Design by  
Anna Silva

Properties and Set Dressing by  
Sarajane Morse Mullins

Technical Direction by Al Forgione

**This show is sponsored by  
Wilson and Jennifer Schünemann**

Assistive Listening Devices are available at this performance.  
If you would like to inquire about using one, ask an usher or a member of house management.

---

Originally produced by Classic Stage Company; John Doyle, Artistic Director  
Presented by special arrangement with TRW Plays.

Funded in part by the  
 **Mass  
Cultural  
Council**



Welcome to The Umbrella Stage Company's 2022/2023 season.

We are beyond happy to be bringing live theater to the region. While the pandemic took its toll on all of us, The Umbrella has remained strong and is committed to continuing to produce bold, daring, and innovative work.

The pandemic has forced many of us to reconsider how we work, what we produce, and what that impact has on our community. During your visit to The Umbrella, I encourage you to spend some time in our Gallery, wander through the three floors of artist studios, and peek into our classrooms. I hope that tonight's performance will leave you wanting to not only come back for more theater, but also to sign up for an art class, come to a gallery opening or concert or film, visit us at Winter Market and Open Studios, engage with our Arts & Environment program, tour our outdoors public art installations, or become a volunteer.

There are so many ways you can participate in the Arts at The Umbrella. We look forward to seeing more of you.

Enjoy the show!

A handwritten signature in black ink, appearing to read "Jerry Wedge". The signature is fluid and cursive, with a large loop at the end of the last name.

Jerry Wedge, *Executive Director*



# Cast

Dr. George Seward.....Dominic Carter\*  
Lucy Westenra.....Gabrielle Hatcher  
Dr. Van Helsing..... Maria Hendricks  
Marilla/Maid..... Bowen Huang  
Renfield..... Sara Jones  
Jonathan Harker.....Joseph Jude  
Swing.....Quinton Kappel  
Mina Harker.....Lisa San Pascual\*  
Drusilla/Merchant/Miller.....Emily Sheeran  
Count Dracula..... Dustin Teuber

*\* Appearing through an Agreement between this theater and Actor's Equity Association, the Union of Professional Actors and Stage Managers in the United States.*

---

**Actors' Equity Association** ("Equity"), founded in 1913, is the U.S. labor union that represents more than 51,000 professional Actors and Stage Managers. Equity fosters the art of live theatre as an essential component of society and advances the careers of its members by negotiating wages, improving working conditions and providing a wide range of benefits, including health and pension plans. Actors' Equity is a member of the AFL-CIO and is affiliated with FIA, an international organization of performing arts unions.

Equity is governed by its own members through an elected Council, representing principal actors, chorus actors and stage managers living in three regions: Eastern, Central and Western. Members at large participate in Equity's governance through a system of regional Boards and Committees. Equity has 28 designated area liaison cities with over 100 members each.



Dear Friends,

Welcome! I am so excited to kick off another fantastic season of theater here in the heart of historic Concord. The first production of the year always feels like a back-to-school moment for us, and we can't wait to share what we have in store for you this season.

The lineup this year is designed to give audiences a reason to return to the theater. Throughout the year, you can expect some beloved stories ready to be re-told, and some familiar narratives presented in a new and exciting way.

First up is Kate Hamill's deliciously clever adaptation of *Dracula*. Through her own unique lens, Hamill has been revisiting the classics and re-introducing them to today's audiences. Hailed as one of the best playwrights in the country and one of the most produced voices in America, her work turns history on its head and forces us to re-examine stories we thought we knew.

Later this fall, Julia Deter (*Hedwig and the Angry Inch*, *The Old Man and The Old Moon*) returns to The Umbrella to direct a new production of *RENT*. Michelle Aguillon also joins us again this season in March to helm our World Premiere of Hortense Gerardo's *Middleton Heights*. The season will close with *The Color Purple*, directed by BW Gonzales who appeared in last season's acclaimed production of *The Colored Museum*.

Stay tuned throughout the year as we also have a few surprises in store! To stay up to date, don't forget to subscribe to our newsletter, follow us on social media, and consider becoming a subscriber to be the first to find out about all the exciting updates.

As always, thank you for your support and for joining us for this performance.

Enjoy the show!

A stylized, handwritten signature in black ink, appearing to read 'BB' or 'Boruta'.

Brian Boruta

*Producing Artistic Director, The Umbrella Stage Company*

# who's who in *Dracula*



**Dominic Carter\*** (*Dr. George Seward*) is blessed and honored to be performing in *Dracula: A Feminist Revenge Fantasy, Really*. He was last seen in The Umbrella Stage's *Fences*, in which he played Gabriel. Among other credits, he has also played Rashad in *The Light*, Sebastian in *Twelfth Night* (Lyric Stage); Michael in *The Greater Good* (Company One); Dr. Martin Luther King Jr, *The Mountaintop*, Katherine Girard in *Mothers and Sons*, Old Lady in *Violet* (Lexington Players). (Justin-Understudy in *BLKS* (SpeakEasy Stage Company); Angel in *Jesus Hopped The A-Train*, Henry Brown in *RACE* by David Mamet (Hovey Players). Dominic is a graduate of The Atlantic Acting School and the winner of 2021 AACT National Theater Best Actor.



**Gabrielle Hatcher** (*Lucy Westenra*) is thrilled to be working with The Umbrella for the very first time. She was last seen in The Asian American Playwright Collective's Playfest 4. She recently designed hair for *Sense and Sensibility* at Concord Players, for which she won a DASH award, and designed sets for *Pillowman* at Hovey Players. Other credits include *Stop Kiss* and *Some Girls* at Hovey Players, *The 48 Hour Film Project*, and the National Film Challenge.



**Maria Hendricks EMC** (*Dr. Van Helsing*) is thrilled to be on the actual Umbrella stage after a pandemic Zoom performance of *Elegant Storm* and a staged reading of *Clean House* in the gallery. OFF BROADWAY: Ruby Sales in *Six Nights in the Black Belt* (Negro Ensemble Co.); Church Soloist in *6 Nights* (Theatre at St. Clements). REGIONAL: *Celebrating Native Joy* (The Oklahoma Cycle-Oglala Lakota Arts in South Dakota); Emily Penrose in *Lifespan of a Fact* (Vermont Stage); Mother (Elliot Norton Award Nomination) in *Passing Strange* (Moonbox Productions); Alsoomse in *I Am This Place* (Plays in Place); Nana Helen in *The Arboretum Experience* (American Repertory Theater); Sipu in

## DIRECTOR'S NOTE:

When Brian Boruta, the Director of Performing Arts, sent me Kate Hamill's script, just the title alone grabbed me. It didn't say *Dracula*, it said *Dracula, a feminist revenge fantasy, really*. My eyes bugged out. My heart skipped a beat. It was a thrilling moment. I was already a fan of Kate Hamill's having seen her adaptation of Jane Austen's *Pride and Prejudice* and having directed her adaptation of *Sense and Sensibility* last year. But an adaptation of Bram Stoker's *Dracula*? Wow.

As I read through the script, I saw what I have seen every day for years: toxic masculinity, mansplaining, sexism, sexual harassment, the patriarchal narrative. She was directly addressing the #MeToo movement. But the script was also delicious and made me laugh out loud numerous times. It was fun, fearless, and fast-paced!

Hamill's adaptation has called out all this bad male behavior. She also made Stoker's female-identifying characters central to the plot. They possess or discover self-empowerment; we see Elinor-and-Marianne-Dashwood/Thelma-and Louise-sisterhood, there's triumphant high-fives, and very dark, terrifying humor (just my cup of tea). And then, to top it all off, Hamill has made Stoker's traditionally male characters, Van Helsing and Renfield, female to boot!

Given the multiple locations and quick transitions between scenes from *Dracula's* castle in Transylvania, to the English seacoast town of Whitby, to an asylum, then a crypt, a church, etc., staging in The Umbrella's Black Box theater was a very exciting challenge (also my cup of tea). Our nimble cast, our design and production teams helped ensure that the play always moved along with "speed of thought," as per the playwright.

I am thrilled to have been given the opportunity to direct this adaptation. Big heartfelt thanks to Brian and The Umbrella, our amazing designers, our hard-working crew, and our talented, fun cast. And thanks to you, our audience, for joining us! Tarps up in the splash zone!

*Michelle Aguilon*



# who's who in *Dracula*

*Listen to Sipu* (New Repertory Theatre); Sister Hubert in *Nunsense* (The Palace Theatre); Carlota in *Dead Man's Cell Phone* (Saco River Theatre); Radio 1 in *Caroline, or Change* (Moonbox Productions/BCA); Church Lady in *Between Riverside & Crazy* (Virginia Repertory Theatre); Mathilde in *Clean House* (Threshold Stage Co. of Maine); La Llorona in *La Llorona* (Fresh Ink). @mariahendricks888 (she/her/hers)

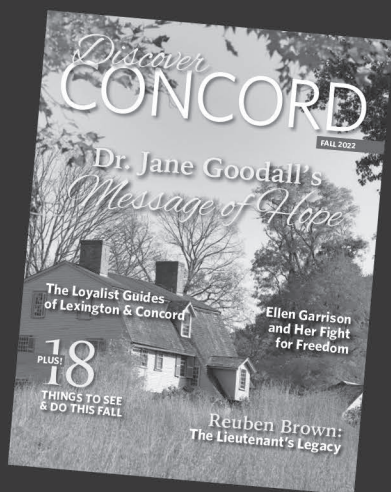


**Bowen Huang** (*Marilla/Maid*) is very excited to join The Umbrella this fall! Emerson College BFA '24 Musical Theater. Regional Credits: *Xanadu* (Muse). Emerson College credits: Musical Theater Against the Grain's *Rock of Ages* (Mayor); Emerson Dance Company (Dancer). Blue Note Shanghai: Musical Theater Cabaret, Soloist. Much love to family and friends for all the support<3. IG: @on\_bw



**Sara Jones** (*Renfield*) has embodied roles that run the gamut--from various characters in a professional children's production of *Huck Finn* to The Pilot in *Grounded*. She has worked in theaters across the world from Zeitgeist Theatre in Boston, MA to The English Theatre in Frankfurt, Germany. She is a former ensemble member of the classical theater company Shakespeare Frankfurt where she performed the roles of Desdemona in *Othello*, Witch (and others) in *Macbeth*, Mayor Stockman in *An Enemy of the People*, Olivia in *Twelfth Night* and Titania in *A Midsummer Night's Dream*. Sara's most notable performances were The Pilot in George Brandt's one woman tour de force, *Grounded*, Veronica in the Tony Award-winning play *God of Carnage*, Ann Deever in *All My Sons*, and Mademoiselle de Tourvel in *Les Liaisons Dangereuses*. Sara has a B.A. in Theatre from Denison University in Ohio, has trained with The London Meisner Company and studied Screen Acting at LAMDA in London. [www.sarabishopjones.com](http://www.sarabishopjones.com)

Whether your passion is theatre, music, or visual arts, *Discover Concord* is a great way to stay connected to the Concord arts scene.



courtesy of Operas7



courtesy of The Umbrella Arts Center



courtesy of Concord Players

In addition to great content on Concord's history and literature, each issue features upcoming arts events, artist profiles, and performance dates.

**Subscribe today and celebrate Concord's artists!**

A one-year subscription includes six issues delivered to your home or office for just \$45 (US addresses).

*Discover*  
**CONCORD**

For more information visit [discoverconcordma.com](http://discoverconcordma.com).

# who's who in *Dracula*



**Joseph Jude** (*Jonathan Harker*) is humbled to make his onstage debut at The Umbrella after being featured in *Middleton Heights* during the Concord Festival of Authors. LA-born/Boston-bred, Jude's stage credits include *The Playwright* in *Vietgone* (Company One), *Bobbie* in *Song of Morning* (Boston Theater Marathon), *Riff* in *West Side Story* (Moonstruck Theater), *Ram* in *Heathers* (Footlight Club), *Favorite Son* in *American*

*Idiot*, and the titular *Wedding Singer* (Phoenix Playmakers), with voice credits including Speakeasy Stage, Fresh Ink, New Rep, Central Square, Liberty Mutual, and Chuang Stage. Jude is a songwriter (FuzzKill), musician (Theater Offensive), composer (Harvard University), and stagehand (ART) who holds a BS Biology/Musical Theater (Emmanuel College) and an MS Speech Language Pathology with a concentration in Voice Disorders (MGH Institute of Health Professions). Much love to this incredible team, and special thanks to Meesh, Brian, KB, and his cat, Munchkin de Milo. IG:@heyjudetorres



**Quinton Kappel** (*Swing*) is thrilled to be sinking his teeth into *Dracula*. Among other credits, he has appeared as *Max* in *Bent* (The Umbrella Stage); *Stanley* in *One Man Two Guvnors* (TCAN); *Nicky* in *Avenue Q* (The Umbrella Stage); *Hamlet* in *Hamlet* (Ghost Light Players); and was last seen in the Boston Theater Marathon this past summer. A stage actor with a growing portfolio of voicework

for video games and other narrative media, he can be heard as the voice of Gandalf in Warner Brothers' *The Hobbit* Pinball Machine and the Narrator of *Colapesce: An Audio Adventure* (Trinacria Theatre Company), which he wrote, edited, and directed. He works as a filmmaker and storyteller throughout New England and his short film *A. Jacks* was recently recognized with *Best Adaptation* and *Best Cinematography* in the festival circuit. He is represented by Andrew Wilson Agency and is currently pursuing his MFA in Film at Emerson College. [QuintonKappel.com](http://QuintonKappel.com)

## THE UMBRELLA HOSPITALITY PARTNERS

### ***Make a night of it!***

We're thrilled to reopen with amazing #DinnerAndAShow partners to help you get the most out of your theater experience! They offer special day-of-show discounts for The Umbrella ticketholders. (Terms and conditions apply. Offers usually exclude taxes, gratuity, and alcohol.)

***See [TheUmbrellaArts.org/Partner-Offers](http://TheUmbrellaArts.org/Partner-Offers).***

---



A D E L I T A

1200 Main Street, Concord, MA 01742  
978.254.0710



97 Lowell Rd, Concord, MA 01742  
978.610.6633

*Fiorella's*

24 Walden Street, Concord, MA 01742  
978.341.9999



48 Monument Square, Concord, MA 01742  
978.369.9200



element  
BY WESTIN

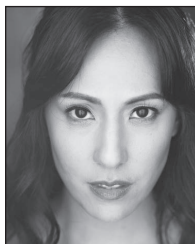
727 Marrett Road, Lexington, MA 02421  
[aloft-hotels.com](http://aloft-hotels.com) | [element-hotels.com](http://element-hotels.com)

---

To learn about the benefits of partnering with The Umbrella, contact Katie at 978.371.0820 x201 or [Katie@TheUmbrellaArts.org](mailto:Katie@TheUmbrellaArts.org)

---

# who's who in *Dracula*



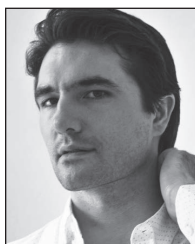
**Lisa San Pascual\*** (*Mina Harker*) is thrilled to be making her Umbrella Stage debut. Lisa was last seen as Hermia in *A Midsummer Night's Dream* (Boston Theater Company) and Olivia in *Twelfth Night Musical* (Eastern Nazarene College Theater for Social Justice). Lisa has performed in radio plays, virtual productions such as Kate in *The Taming of the Shrew* and Clara in *Pygmalion*, and independent feature films and web

series such as *Dominos* and Daisy/Quake in *Avengers: World*. Lisa wants to thank Brian and Michelle for this opportunity, and Fred for teaching her how "the penny drops." Much love and gratitude to her husband Andy for his support and for his partnership in smashing the patriarchy.



**Emily Sheeran** (*Drusilla/Merchant/Miller*) is ecstatic to be returning to the stage in *Dracula: A Feminist Revenge Fantasy, Really!* They last performed as Imogen in Shakespeare's *Cymbeline* (McGill University English Department). Previous roles also include Bérenger in *Rhinoceros* (McGill Players' Theatre), Amanda in *Moon Over the Brewery* (ACME Theater - DASH Award Winner), Elle Woods in *Legally Blonde*

(METG Best Actress), and Robin in *The Woodsman* (Hovey Players - DASH Award Winner). They will also be playing Johanna in *Sweeney Todd* at Actorsingers in November. Thanks to the cast and crew for making this production such a wonderful experience, as well as family and friends for their support.



**Dustin Teuber** (*Count Dracula*) is thrilled to be a part of this production of *Dracula* and to play the king of vampires himself. Dustin is lucky to be with this all-star cast and to be directed by Michelle Aguillon. Other credits include Mr. Darcy in Kate Hamill's *Pride and Prejudice* (NH Theater Project), Dave Lester in *Black Super Hero Magic Mama* (Company One), Marco in *View from the Bridge* (The Umbrella Stage Company),



GREATER  
**BOSTON  
STAGE**  
COMPANY

A Halloween Treat!  
World Premiere: October 21 -  
November 6, 2022

[greaterbostonstage.org](http://greaterbostonstage.org) | 395 Main Street, Stoneham, MA | 781-279-2200

# who's who in *Dracula*

Pino in Hortense Gerardo's *Scentsation*, and *Dracula* once before at The Company Theater. Thanks for coming out to see our production!



**Brian Boruta** (*Producer, Director*) This is Brian's 45th production with The Umbrella and his 42nd as the Director of Performing Arts, during which time he has earned Best Production nominations for *Glengarry Glen Ross*, *Bloody Bloody Andrew Jackson*, *Red, Angels in America*, *Equus* and *Bonnie & Clyde*; a DASH Award for Best Play for *True West* and *To Kill A Mockingbird*, and Best Musical for *Parade* and

*Big Fish*. Umbrella directing credits include: *Parade* (Dash Award for Best Director of a Musical) *Big Fish* (DASH Nom.), *Hair*, *Evita*, *Side Show*, *Next to Normal*, *The Rocky Horror Show*. Elsewhere: *Sweeney Todd*, *Legally Blonde*, *Godspell*, *Seussical the Musical*, *The Actor's Nightmare*, *Sister Mary Ignatius Explains It All for You*. Favorite on-stage credits include Billy Lawlor in *42nd Street* (DASH Nom.), Judas/ John the Baptist in *Godspell*, Cosmo Brown in *Singin' in the Rain*, Austin in *True West*, and Greg in *A Chorus Line*. As a designer and educator, Brian has worked with numerous college, high school and community groups including Merrimack College, Goddard College, Framingham State University, The Performing Arts Center of MetroWest, Brookline, Chelsea and Wellesley Public School. His solo piece, *UnMasqued*, has been workshopped and performed at the Wheeler Theater in Port Townsend, WA. Brian holds a Master of Fine Arts in Interdisciplinary Arts from Goddard College and was named the recipient of the 2014 Framingham State University Young Alumni Achievement Award for his work in the performing arts.



# The Concord Players 2022-2023 Season

[www.concordplayers.org](http://www.concordplayers.org)  
978-369-2990

November  
4-19, 2022

Directed by Andrew Rhodes



by Patrick Barlow

# INDECENT

איסגעלאסן

by Paula Vogel

February  
10-25, 2023

Directed by Shira Gitlin

April 28 -  
May 13, 2023

Directed by Katie Swimm



Book by  
Allan Knee

Music by  
Jason Howland

Lyrics by  
Mindi Dickstein



# who's who in *Dracula*



**Michelle M. Aguillon** (*Director*) Umbrella: *Fences*, *Disgraced*, *To Kill a Mockingbird*, *True West*. Others: *The Piano Lesson*, *Rapture Blister Burn* (Vokes), *Hold These Truths* (Hope Summer Rep), *Sylvia*, *Passion* (Theater Uncorked, DASH Winner 2022), Asian-American Playwright Collective PlayFest (Starlight), *The Walking Plays* (Lyric), *Boston Resilience Project Plays: East Boston*, *Nos Vemos* (Speakeasy), *Augusta and Noble* (Emerson), *Vietgone* (Company One), *Proof* (Central Square), *Clybourne Park*, *Terra Nova*, *Of Mice and Men* (Quannapowitt), *Sense and Sensibility* (Concord Players), *Rabbit Hole* (EMACTfest Winner 2014), *Marjorie Prime*, *Pillowman*, *Kimberly Akimbo*, *Looking for Normal*, *A Midsummer Night's Dream*, and *G.R. Point* (Hovey, IRNE Winner 2004). Michelle is the Executive Director of the Creative Arts School in Reading. She is a proud board member at EMACT and StageSource. In March 2023, Michelle directs the world premiere of *Middleton Heights* by Hortense Gerardo at The Umbrella. (she/her/hers)



**Kate Hamill** (*Playwright*) is a playwright and actor based in NYC. For the last three seasons she has been included on the most produced playwright list in *American Theatre Magazine*. Her most recent work includes the virtual production of *Badass Galboss Power Hour* for Primary Stages; *Dracula* at Classic Stage Company; the New York premiere of *Little Women* by Primary Stages (commissioned and received its world premiere at The Jungle Theater in Minneapolis); and *Mansfield Park* which was commissioned by and debuted at Northlight Theater. This past season she debuted *Ms. Holmes & Ms. Watson-#2B* at Kansas City Rep and *Emma* at The Guthrie. Kate's adaptation of Jane Austen's *Sense & Sensibility* (in which she originated the role of Marianne Dashwood) had its world premiere off-Broadway, produced by Bedlam. *Sense & Sensibility* was named one of the "Top Ten Plays of 2014" by both Ben Brantley of the *New York Times* and by the *Huffington Post*, which called it "the greatest stage adaptation of

wbur

npr



# LISTEN ANYWHERE, ANYTIME.

News. Interviews. Storytelling.  
Your phone is a radio — stream audio, live and on demand.

[wbur.org/listen](http://wbur.org/listen)



## who's who in *Dracula*

this novel in history." It reopened in New York in January of 2016 at the Gym at Judson where it ran for almost 300 performances. *Sense & Sensibility* had its regional debut in spring 2015 at Dallas Theater Center. It has been produced at the Folger Theatre in Washington DC (four Helen Hayes awards), The Guthrie Theatre in Minneapolis and theaters around the country. Her adaptation of *Vanity Fair* debuted at The Pearl Theater in 2017 with an extended run and was seen in a co-production between Shakespeare Theater in DC and American Conservatory Theatre in San Francisco. Her adaptation of *Pride and Prejudice* started at Hudson Valley Shakespeare Festival in a production that moved to Primary Stages, in an extended production. *Pride and Prejudice* received an Off Broadway Alliance nomination for Best Unique Theatrical Experience. The play was also seen at WaterTower Theater in Addison, TX and Seattle Rep and has now been licensed nationwide. She is currently working on an adaptations of *The Odyssey* which will be produced by ART, as well as several new original plays, including *The Piper* (2019 O'Neill NPC finalist; PlayPenn selection) and *The Prostitute Play* (developed at Cygnet Theater). [www.katehamill.com](http://www.katehamill.com).

**Sydney Boncodd** (*Stage Manager*) was last seen at The Umbrella as the Stage Manager of *Fences* and *The Joy Luck Club* in 2019, and *Disgraced* in 2018. She has also Stage Managed at other theaters in the area, including for *American Buffalo*, *Black Comedy* and *Coyote on a Fence* at Acme Theater and *Rocket Man*, *Oscar & Felix* and *The Pillowman* (NH Community Theater award for Excellence in Stage Management) at Hovey Players. She is grateful to be back at The Umbrella for this exciting new production. Her hometown is Carlisle, MA and she currently lives in Boxborough, MA.

**James Cannon** (*Sound Designer*) is a freelance audio engineer, sound designer, composer, and music producer from Chicago, IL, and currently based in Watertown, MA. Recent theatrical credits include: *The View Upstairs* (Speakeasy Stage), *Well*, *Straight White Men* (Hovey Players), *The Rocky Horror Show*, *Passing Strange* (Moonbox Productions), *The Last Wide Open*, *The Old Man & The Old Moon*, *Head Over Heels*, *The*

# who's who in *Dracula*

*Colored Museum* (The Umbrella Stage Company), *NIGHTTOWN: An Operatic Reimagining of James Joyce's Ulysses* (Lowell House Opera), and *Spring Awakening* (Wellesley Theater Project).

**SeifAllah Salotto-Cristobal** (*Lighting Designer*) is excited to be back at The Umbrella Stage Company for his 10th season. He has been telling stories using light and video for the past 17 years. He holds a Master of Fine Arts in Design from the University of Missouri-Kansas City with a focus on Lighting and Projection Design. His career has taken him across the country and has allowed him to design for many companies in Opera, Dance, and Theater including most recently at Opera Maine (Portland, ME), Portland Stage Company (Portland, ME), Portland Theater Festival (Portland, ME), Brown/Trinity Rep MFA Program (Providence, RI), Wagon Wheel Center for the Arts (Warsaw, IN), and Theater at Monmouth (Monmouth, ME). He currently serves as the Assistant Professor of Lighting Design at the University of Southern Maine where he brings his knowledge and experience to help shape the next generation of theater professionals, focusing on developing complete storytelling. [www.seif.design](http://www.seif.design)

**Erin Field** (*Sound Board Operator*) is an interdisciplinary theater artist based out of Boston, Massachusetts. She recently graduated from Suffolk University with a BA in Theatre Arts with a focus in stage management, playwriting, directing and sound design. This is her first production with The Umbrella Stage Co. Recent credits include *Matilda* (Break A Leg Theater Works), *Maytag Virgin* (Hovey Players) and *Fall Showcase 2021* (Suffolk University). (she/her/hers)

**Sarah Flanagan** (*Fight Director*) is a freelance Fight Director and Certified Teacher with the Society of American Fight Directors. She has trained here in the states, as well as with the British Academy of Stage and Screen Combat, Stage Combat Deutschland, and the Historical European Martial Arts Alliance. Every summer, Sarah coordinates the National Stage Combat Workshop—the biggest workshop of its kind. Sarah works primarily on the East Coast; trusty dog and a bag full of

## who's who in *Dracula*

swords in tow. They choreograph for plays, musicals, and ballets, and have begun branching into film. When not on the road, you're likely to find them out on the Charles in their kayak, or up a tree with a book. Fights By Flanagan is available for Fight Direction, Movement Direction, Stage Combat Classes, and Weapons Rentals. Recent productions include *As You Like It* (Louisville Ballet); *Shrike, and Truth or Consequences* (Fresh Ink); *Romeo and Juliet* (Ole Miss); and *Boom* (Wellesley Repertory Theatre). (she/they)

**Valerie Forgione** (*Music Composer*) has been composing music for independent theater and film for over a decade. She has received three DASH awards, including one for 29 Short Pieces for Solo Cello, written exclusively for *The Mai* at AFD. Her work has been featured on prime time television and in film, advertisements, podcasts, and video games. She is also comfortable on stage, having appeared as Mary Magdalene in Boston Rock's *Jesus Christ Superstar*, Bitsy Mae in *Sordid Lives*, and most recently in Shakespeare's *A Midsummer Night's Dream* and *Romeo & Juliet* at QP. The singer and multi-instrumentalist remains active in the local music scene and fronts the Boston-based band, Lovina Falls. [www.lovinafalls.com](http://www.lovinafalls.com), @lovinafalls

**Melody (Yu-Hsuan) Hsu** (*Scenic Design*) is a multidisciplinary artist from Taiwan. She graduated from Emerson College with a BFA in Design/Technology and a MA in Media Design. Her recent works include scenic and costume design for *Hold These Truths* (Hope Repertory Theatre) and production design for *Space Girl* by Frances Forever. Beyond her work in theater and film, Melody is a socially engaged civic designer. Most recently, she was a summer fellow with the Boston Mayor's Office of New Urban Mechanics, leading collaborations with governmental and community stakeholders to generate momentum for creativity and a sense of community. Melody continues to dedicate her time to delivering multimedia experiences for equity as she curates work that strives to express, educate, and entertain.

# 2022-23 STAGE COMPANY TICKETS

Typical performance schedule:  
Fridays & Saturdays at 8pm, Sundays at 3pm

Enjoying the show? Why not upgrade today's ticket to one of our flexible, discounted season subscription packages? Our Box Office will be happy to help you!

## **PREMIER SEASON SUBSCRIPTION** (Our BEST Value!)

Save 20% off single ticket prices and lock in your seats to all 4 shows!

## **FLEX PASS PACKAGES**

Flex Pass Packages available in block of 4 or 6 tickets—use them all at once or spread out over multiple shows this season, with best available seats at the time of booking!

## **GROUP TICKETS**

10% off Groups of 10-14 and 15% off Groups of 15 or more

The Umbrella Stage Company is pleased to participate in the MCC Card-to-Culture program, providing discounted access to arts experiences for EBT, WIC, and ConnectorCare cardholders. Please contact the box office for details.



Find the best pricing, scheduling and seating options  
at our 40 Stow Street Box Office (open 12-4pm M-F  
and 2 hours prior to performances), 978.371.0820 x209  
or [TheUmbrellaArts.org/boxoffice](https://TheUmbrellaArts.org/boxoffice)

[TheUmbrellaStage.org](https://TheUmbrellaStage.org) | 978.371.0820

# who's who in *Dracula*

**Kayleigh Kane** (*Intimacy Director*) is a Boston-based theatrical intimacy professional and multi-disciplinary artist. She's received training from Intimacy Directors and Choreographers, Theatrical Intimacy Education, National Society of Intimacy Professionals, and more. Recent intimacy direction credits include *The Moors* at Entropy Theatre, *Marriage or MADE* at Harvard University, and *Head Over Heels* here at The Umbrella Stage Company. In addition to designing movement and intimacy for scripted theater, Kayleigh teaches and performs at ImprovBoston, where she enjoys helping people of all backgrounds unlock their creativity through improvisation. In everything she does, Kayleigh is a joyful believer in pushing the boundaries of the art form while supporting the boundaries of the artists. Learn more at [kayleighkane.com](http://kayleighkane.com).

**Sarajane Morse Mullins** (*Props Master*) is a Boston-based actor and theater artist. Previous Umbrella credits for properties and set dressings include *Tuck Everlasting*, *42nd Street*, *Glengarry Glen Ross* (Dash Nomination), and *Joy Luck Club*. Past appearances on The Umbrella stage include Lucille in *Parade* (Dash Nomination), Blanche Barrow in *Bonnie and Clyde* (Arts Impulse nomination, DASH nomination), and ensemble roles in *Tuck Everlasting*, *Big Fish* and *Evita*. SJ holds a BFA in Theater Arts from Boston University and trained abroad with the London Academy of Music and Drama. She has appeared at The Huntington Theater Company, Greater Boston Stage Company, Turtle Lane Playhouse, and over 50 productions in the Midwest. She annually adjudicates for the Massachusetts Educational Theater Guild. More at [www.officiallysarajane.com](http://www.officiallysarajane.com)

**Johnny Penney** (*Assistant Stage Manager*) has worked as a fly captain and stage carpenter at The Umbrella since its production of *42nd Street* in 2019. He most recently was assistant stage manager on The Umbrella's production of *The Last Wide Open* and *The Old Man and The Old Moon*. He has also worked as a crew chief for the Opera Institute's production of *The Cunning Little Vixen* and as fly captain/stage operations staff member for several seasons at The Glimmerglass Festival.

# ABOUT THE UMBRELLA

## OUR MISSION

The Umbrella enriches lives and builds a vibrant and inclusive community through the arts. We promote creativity, learning, personal growth, and cultural exchange through accessible arts education programs, performing and visual arts presentations, and community collaborations.

## OUR HISTORY

**Land Acknowledgement:** Related to our mission of enriching lives and building a vibrant, inclusive community through the arts, we would like to acknowledge that the land we use for classes and events—the land on which The Umbrella is built here in the Musketaquid area—are the original homelands of the Nipmuc and Massachusett peoples. We acknowledge the painful history of genocide and forced removal from this territory, and we honor and respect the many diverse Indigenous peoples still connected to this land on which we gather.

**The Building:** Built as a high school in 1929 and the town's first steelbeamed structure, Emerson School has long been an important historic and architectural landmark in downtown Concord. The building served as a public school for more than five decades before it was deemed obsolete and insufficient for a growing student population.

**The Organization:** In the early 1980's, a group of Concord volunteers and visionaries realized that the aging Emerson School building, slated for demolition, could be saved and converted into a community arts center. So, in 1982, The Umbrella's founders obtained tax-exempt status as a private non-profit organization and developed a detailed multi-use proposal for the building, which the Board of Selectmen approved in 1983. This agreement retains the spirit of the original deed, which states that the land will be used for education, and is still in place today. The Town of Concord retains ownership of the building, which it leases to The Umbrella Arts Center, which in turn is responsible for programming, operating, building maintenance, and capital improvement costs.

*The Umbrella, Inc. is a qualified 501(c)3 non-profit organization.*



## who's who in *Dracula*

**Anna Silva** (*Costume Design*) has been costuming in and around the Boston area for the better part of 20 years. *Disgraced* at The Umbrella, *Titanic* at North Shore Music Theater, and *Piano Lesson* at Vokes Players are some of her most recent work. She is thrilled to be back at The Umbrella with this amazing cast and crew.

**Sara Valentine** (*Dialect Coach*) is an Associate Professor and Chair of the Department of Theatre at the University of Southern Maine where she directs for the department main stage and teaches classes in acting, voice and speech, and public speaking. Her voice training and teaching is based after the Roy Hart voice approach, having studied with teachers of the Centre Artistique International Roy Hart (CAIRN) since 2005. Sara is a member of CenteredHeartCollective.com in Maine where she leads the workshops "Expressed Voice, Empowered Self". She holds an MFA in Acting from the University of Delaware Professional Theatre Training Program. She is co-creator of the weekly astrology podcast SisterStargazers.com and the YouTube series Taphotopia.com.

**Jingwen Zhang** (*Assistant Stage Manager*) graduated from Emerson College, Theater BFA. A bilingual artist working internationally. Currently working in Boston as a freelance director, playwright, and stage manager. Directed *The Orphan of Zhao: A Modern Adaptation* in Chuang Stage, *Love, and Everything Related* (Online theater). Worked as the stage manager in *A Deal*, *Ghost of Keelung* with Chuang Stage, and *The Flight of a Legless Bird* in Beijing Prism Theater Festival. Also served as assistant stage manager in *The Colored Museum* with The Umbrella Stage Company and worked as the production assistant for *Much Ado About Nothing* at Commonwealth Shakespeare Company.

WRITTEN BY **August Wilson**  
DIRECTED BY **Lili-Anne Brown**

AUGUST WILSON'S  
**JOE TURNER'S  
COME AND GO**

**THE HUNTINGTON THEATRE**    **OCT 14 - NOV 13**  
ARTWORK BY **EKUA HOLMES**

**THE LYRIC STAGE**  
YOUR THEATRICAL HOME

NOV 11 - DEC 18

It's so **BAD**, it's **GOOD**.

**THE PLAY  
THAT GOES  
WRONG**

BY **HENRY LEWIS,  
JONATHAN SAYER  
& HENRY SHIELDS**  
DIRECTED BY **FRED SULLIVAN JR.**

LYRICSTAGE.COM | COPLEY SQ. | 617.585.5678

Roald Dahl's  
**Matilda**  
The Musical

Book **DENNIS KELLY**    Music & Lyrics **TIM MINCHIN**

Directed by **EMILY BANIH**  
Music Director **DAVID COLEMAN**  
Choreographed by **LARRY SOUSA**

**OCTOBER 21 - NOVEMBER 20, 2022**  
VISIT [WHEELUCKFAMILYTHEATRE.ORG](http://WHEELUCKFAMILYTHEATRE.ORG)  
FOR MORE INFORMATION ☎ 781.462.1163

**WHEELUCK FAMILY THEATRE** **BOSTON UNIVERSITY**

**Dracula**

A feminist revenge fantasy *really*



# *Production Staff*

Producer.....Brian Boruta  
Director..... Michelle Aguillon  
Music Composer..... Valerie Forgione  
Stage Manager..... Sydney Boncoddio  
Assistant Stage Managers..... Johnny Penney  
Jingwen Zhang  
Scenic Design..... Melody Hsu  
Lighting Design..... SeifAllah Sallotto-Cristobal  
Sound Design.....James Cannon  
Costume Design..... Anna Silva  
Properties and Set Dressing..... Sarajane Morse Mullins  
Technical Director.....Al Forgione  
Intimacy Director..... Kayleigh Kane  
Fight Director..... Sarah Flanagan  
Scenic Charge..... Page Evett  
COVID Safety Officer..... Cathie Regan  
Playbill Design.....Priscilla White Sturges

## **THE UMBRELLA BOARD OF DIRECTORS**

Deborah Yamin, Chair

Ellen McHale, Vice Chair

Frank Hill, Treasurer

Cathy Folts, Clerk

Elizabeth Cochary Gross, Capital Campaign Chair

Gail Burr

Casey Carlson

Pierre Chiha

Tete Cobblah

Kevin Foley

Michael Goodwin

Robert Le Roy

Andy Newman

Kate Reid

Debra Rutter

Jennifer C. Schünemann

Nancy Traversy

Marquis Victor

Tony Williams

## **THE UMBRELLA STAFF**

Jerry Wedge, Executive Director

Brian Boruta, Director of Performing Arts

Rebecca Campbell, Education Program Manager

Katie Cimet, Assistant Director of Development

Megan Connor, Major Gifts Officer

Kyle Crawford, Arts & Environment Program Coordinator

Melissa Greven, Office Administrator

Stewart Ikeda, Director of Marketing & Strategic Communications

Madeline Miller, Director of Arts & Environment

Chris Mekal, Chief Financial Officer

Zachary Mickelson, Ceramics Program Manager

Wendy Page, Finance Director

Cathie Regan, Performing Arts Program Assistant

Sarah Shiner, Marketing Associate

Jason Springer, Director of Education

Eileen Williston, Deputy Director



# Acknowledgments

Comella's  
Concord Lumber  
Greater Boston Stage Company  
West Concord Wine and Spirits  
John Downs

---

Our 2022-2023 Season was created in collaboration with members of The Umbrella Stage family, including Board, Staff, Directors, Designers, and Performers. We extend our deepest thanks for their time, insights, and perspectives.

Michelle Aguillon, Director  
James Cannon, Sound Designer  
Casey Carlson, Board Member  
SeifAllah Sallotto-Cristobal, Lighting Designer  
Shani Farrell, Performer  
Stewart Ikeda, Director of Marketing and Communications  
Kara Chu Nelson, Performer  
Barbara Pierre, Performer  
Jerry Wedge, Executive Director  
Nancy Curran Willis, Director  
Eileen Williston, Deputy Director  
Deb Yamin, Board Chair

## THE UMBRELLA 2022-2023 *Leadership Giving Society*

We are grateful to all of our supporters, especially the following members of our 2022-2023 Leadership Giving Society. Annual gifts at these levels have outsized impact – providing essential operating support and serving as powerful endorsements of the organization.

### **\$50,000 +**

Anonymous  
Liz and Phillip Gross  
Gregory Maguire and Andy Newman

### **\$25,000 - \$49,999**

Dennis and Kim Burns  
Gail and Matt Burr  
Kevin Foley and Leah Flanigan  
Matthew and Stephanie Magee  
Jennifer and Wilson Schünemann

### **\$10,000 - \$24,999**

Anonymous  
John and Joan Freeman  
Kevin and Gunilla Gorman  
Ed Kane and Marty Wallace  
Ellen and William McHale  
Kate and Mark Reid

### **\$5,000 - \$9,999**

Anonymous  
Johanna and John Boynton  
Andrea Brox and John McCarthy  
Dinah Buechner-Vischer  
Casey Carlson and Bill Stone  
Charles and Gloria Clough  
Nancy Donahue  
Marjorie Findlay and Geoff Freeman

Fritz and Cathy Folts  
Heather Fredette  
Frank Hill and Cynthia First  
Fritz Kussin  
Elaine Labrecque and Gary Vilchick  
Tim and Abbey Redmond  
Nancy Traversy and Martin Lueck

### **\$2,500 - \$4,999**

Andrea and Jeffrey Adams  
Penny and Chris Austen  
Beth and Ko Baryiamas  
Ann Marie and Dick Connolly  
Cynthia and Bryon Deysler  
Sue Gladstone and Dave DeLong  
Ann Jennings  
Sarah and Robert Le Roy  
Jean and Alan Lightman  
Jodi and Mark Loughlin  
Michael and Robin Malouf  
Melanie and Matt O'Hare  
Brian and Maryrose Sykes  
Charity and Thomas Tremblay  
Jerry and Carole Wedge  
Kaitlyn and Nate Whittier  
Deborah Yamin

### **\$1,000 - \$2,499**

Anonymous  
Amy and Bill Barrett  
Tracey and Tom Bird  
Elizabeth Brogaard-Allen and Nicholas Allen  
Jane Brown  
Suzanne and Michael Broxson  
John and Diana Clymer  
Nancy Curran Willis and Bill Willis  
Ronald and Holly Darzen  
Maureen and Tim Dibble

Michael and Bernadette Feeney  
Scott and Kristine Freeman  
Elmer Funkhouser and Katharine Stout  
Pamela Gannon and David Douglas  
Patricia Garrett  
Julie and Cary Hagan  
Fawn Hardison and David Mayer  
Michael and Mary Ellen Harney  
Merewyn Harrington  
Lonnie Harvey and Jonathan Moore  
Cathy and Jon Jenkins  
Ryan and Mallory Kauppila  
Anne and Dee Keesler  
Jonathan Keyes  
Jack Klinck and Julie Kahn  
Melissa Koester  
Holly and Greg Legault  
Susanne and Karl Liebich  
Deborah and Richard Loverd  
Susan Lynch and James Richardson  
Sheilah and Mike McCauley  
Anmol Mehra  
Chris Mekal and Gilles Quintal  
David and Andrea Meyers  
Janice Miller  
John Muresianu and Patti Satterthwaite  
Hunter Nadler  
Amy and Bouke Noordzij  
Nick and Ann Noyes  
Jamie Patterson  
Judy Perkins  
Ridge and Frances Powell  
Rebecca Purcell  
Donna and Tom Quirk  
Jane Rapalus and David Ruediger  
Dawn and Jonathan Rennert  
Kate and Chris Renyi  
Rosse Family Charitable Foundation

Wade Rubinstein and Jill Block  
Debra Rutter  
Holly and Louis Salemy  
The Sharpe Family Foundation  
Melinda Shumway  
Peter and Anne Standish  
Carolyn and Eric Stein  
Steven and Jennifer Stone  
Mimsey and Charles Stromeyer  
The Webb Family Foundation  
Joe Wallace and Elizabeth Chang  
Malcolm Walsh and Kathleen O'Hara  
Patrick and Kim West  
Abby and Tim White  
Brenda White  
Jess Williams  
Barbara and James Willis  
Madelene and Eric Wilson

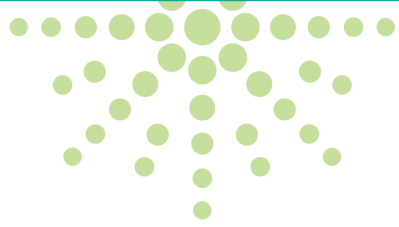
## **BUSINESS PARTNERS**

Adelita  
Bank of America Private Bank  
Bernstein Global Wealth Management  
Enterprise Bank  
Foundation for MetroWest  
LandVest, Inc.  
Massachusetts Cultural Council  
Middlesex Savings Charitable Foundation  
PNC Bank  
Sorrento's Brick Oven Pizza  
Takeda Inc.  
The Kim Patenaude and Rory Fivek Real Estate Team  
WBUR  
West Concord Wine and Spirits  
Xeric Foundation

---

For more information about our Leadership Giving Society, please contact Megan Connor at [megan@theumbrellaarts.org](mailto:megan@theumbrellaarts.org) or 978-371-0820 x214.

---



# THE UMBRELLA<sup>SM</sup>

## ARTS CENTER



Professional Stage Company • Ceramics Studio  
Musketquid Earth Day • 3 Gallery Spaces  
Adult Art Classes • Classroom & Theater Rentals  
Youth Summer Camps & Vacation Week Arts  
Films • Art Parties • Digital Art • Dance Studio  
Public Art • Solstice Celebrations  
Winter Market • Artists-in-Residence  
Open Studios • Community Collaborations  
Concerts • Volunteers & Internships  
Art Auctions • Photography • Makerspace



[TheUmbrellaArts.org](http://TheUmbrellaArts.org)



#DiscoverYourArts