

THANK YOU, LEADERSHIP!

With sincere appreciation, we thank The Umbrella's volunteer leadership, many of whom have guided and supported our community arts center for a long time. We are grateful for your gifts, time, talent, and all that you do to champion The Umbrella's mission.

BOARD OF DIRECTORS

Allene Riley Kussin
Chair
Deborah Yamin
Vice Chair
Frank Hill
Treasurer
Marc Silver
Clerk
Elizabeth Cochary Gross
Capital Campaign Chair
Tete Cobblah
Bryon Deysher
Cathy Folts
Michael Goodwin
Matthew I. Growney
Robert Le Roy
Gregory Maguire
Ellen McHale
Kate Reid
Debra Rutter
Jennifer C. Schünemann
Jonathan E. Smith
Nancy Traversy
Tony Williams

ADVISORY COUNCIL

Jeff Adams
Walter Birge
Jill Block
Alisha Boyajian
Jennifer Brock
Kim Burns
Pierre Chiha
Alicia Cleary
Rick Cleary
Di Clymer
Gayle Colman
Rich Colman
Ann Marie Connolly
Anne Denna
Dave Douglas
Tracie Dunn
Dawn Epstein
Bob Ewing
Bernadette Feeney
Leah Flanigan
Natalie Gardner
Andrew Goldstein
Lucy Goldstein
Sing Hanson
Ed Hurley-Wales
Jennifer Hurley-Wales
Michio Ihara
Cathy Jenkins
Jon Jenkins
Denis Jenssen
Mary Johnson
Karen Jourdenais
Nicole Kelly
Claire King
Melissa Koester
Carol Krauss
Rickie Krug
Betsy Levinson
Susanne Liebich
Jean Lightman
Bar Littlefield
Bart Littlefield
Peter Lovis
Leslie Mahoney
Halley McIlwain
Sven Olson
Max Payne
Seema Peterson
Barbara Powell
Laura Reynolds
Diana Rigby
Mathias Rosenfeld
Chris Saia
Jon Schmalenberger
Dan Schragger
Melinda Shumway
Sergio Siani
Mally Skok
Kate Stout
Priscilla Sturges
Hilary Taylor
Valerie Thayer
Charity Tremblay
Lisa Turvey
Bill Turville
Jay Vogt
Jim Willis
Carol Wilson
Elise Woodward
Linda Ziemba



PHOTO CREDITS:
Gillian Gordon, David Rosen, Jim Sabitus, Sujitha Terala, Jerry Wedge, Rob Weisman
DESIGN: Priscilla White Sturges, Waterman Design

THE UMBRELLA 2018 ANNUAL REPORT

Dear Umbrella Community,

"It always seems impossible until it's done."

Nelson Mandela's poignant words sum up our feelings about our quest over these past few years at The Umbrella. It has been years in the making, but thanks to generous, committed arts-lovers like you, we are nearing what had seemed an impossible goal only a few years ago—bringing a top-quality arts destination to this region!

Reviewing last year's letter about having raised \$11 million dollars, we are astounded—delighted!—to find we've now topped the \$17 million mark toward our \$20 million capital campaign goal. "It always seems impossible..."

This progress, along with so much else that's magical in the daily life of The Umbrella, finds us so grateful, and humbled. Through gifts and sponsorships, our annual donors again generously provided operating support that allows us to offer our extraordinary Arts Education, Arts & Environment programs, award-winning Performing Arts, and Visual Arts programs. None of this would be possible without your support—thank you for your continued investment in The Umbrella. This report recognizes all of our annual donors and the impact of their philanthropy.

We are on the verge of bringing a new level of creative energy and excellence to our region. With your help, our reach has grown beyond expectations. Beyond the 'impossible'!

Please accept our thanks for taking this journey with us. We look forward to welcoming you to a celebration—or two—in our new building, and at our many programs and events.

Thank You!

Allene Kussin
Allene Riley Kussin
Board President

Jerry Wedge
Jerry Wedge
Executive Director



And all of the students, teachers, artists, audiences and staff at Your Umbrella!



Demolition started in the spring of 2018 followed by excavation for the new wing. Construction is on schedule for a Grand Opening in Fall 2019.

THE UMBRELLA TEAM

The Umbrella staff are leaders and professionals in the fields of visual and performing art forms, educational programming, the environment, and community outreach. The team shares a commitment to enriching lives and building a vibrant community through the arts.

Executive Director: Jerry Wedge
Director of Performing Arts: Brian Boruta
Assistant Director of Development: Katie Cimet
Major Gifts Officer: Megan Connor
Development Associate: Bridget Doherty
Interim Director of Development: Beth Garvin
Strategic Marketing & Communications: Stewart Ikeda
Director of Arts & Environment: Nancy Lippe
Chief Financial Officer: Chris Mekal
Education Associate: Danielle Moriarty
Visual Arts Manager: Jess Muise
Ceramics Program Manager: Mike Roche
Director of Arts Education: Jason Springer
Volunteer Coordinator: Kathy Warren



THE UMBRELLA
COMMUNITY ARTS CENTER

40 STOW STREET, CONCORD MA 01742
978.371.0820
WWW.THEUMBRELLAARTS.ORG



THE UMBRELLA FY18 HIGHLIGHTS

The Umbrella's **Arts Education Program** built upon its existing reputation for quality arts instruction for all ages and abilities. Our talented faculty of artists and educators brought their knowledge and skill to our community, making our classrooms that place to discover new art forms, pursue a hobby, or work towards mastery in a chosen medium. The Department began the year with the highest enrollment ever in its spectacular summer camp, which is rapidly becoming a must-have summer experience for kids. The summer included the fifth year of ARTS & REC, a partnership camp with The Concord Recreation Department. As renovations began in Fall 2017, the Education Department moved most classes and operations to temporary residence at The Umbrella Annex at 57 ORNAC. The Ceramics Program remained at 40 Stow Street.

The **Arts & Environment Program** continued to expand its reach and impact with new and familiar partnerships and projects. Through our community celebrations, classes, workshops, and public art activities we offered 56 programs, reaching close to 4,500 people in the Concord and extended communities. A few highlights: We partnered with The Old Manse in a new Earth Day celebration format, hosting a dynamic festival featuring more tables, wildlife, and performance art. The Umbrella initiated a pilot Earth Day Celebration in Maynard, and provided parade-making workshops for the 5th Annual celebration in Lowell. Our popular new outdoor youth education program, Ninjas in Nature, connects participants to the earth and nature through skill-based creative play and problem solving. We continued to provide after-school and vacation programs in Acton, Lowell, and Framingham, taking youth into nature and bringing nature into the classroom. For a second year, the Art Ramble and the Cardboard Boat Race Challenge invited people to connect to place through experiencing and creating art in the outdoors.

Our **Performing Arts Program** continued to set new milestones with another smash-hit season. Four productions were recognized with a record-setting total of 31 DASH Award nominations, including Best Play nominations for TO KILLA MOCKINGBIRD and GLENGARRY GLEN ROSS and a Best Musical nomination for PARADE. At the end of the night PARADE and MOCKINGBIRD claimed the big trophies, and The Umbrella took home 11 awards in all. Thanks to the work of a dedicated team of actors, designers, and directors, The Annex welcomed over 4,000 audience members at more than 50 sold-out performances. We look forward to extended runs with added performances at every production this season.

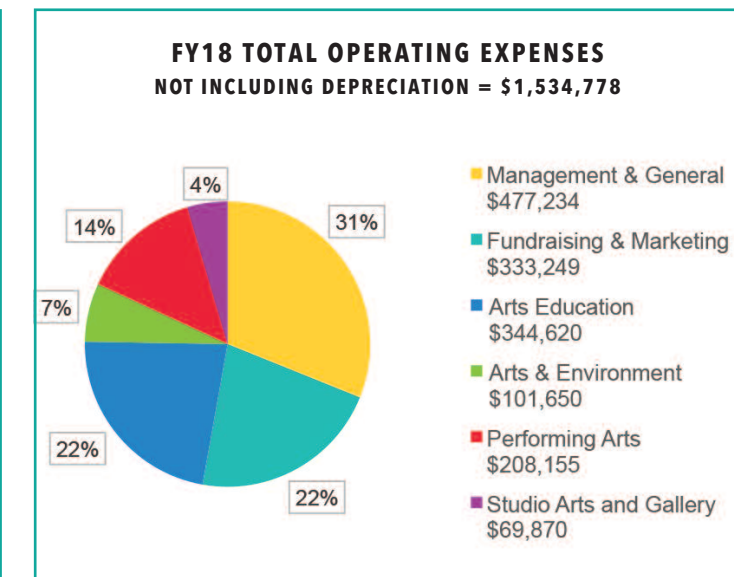
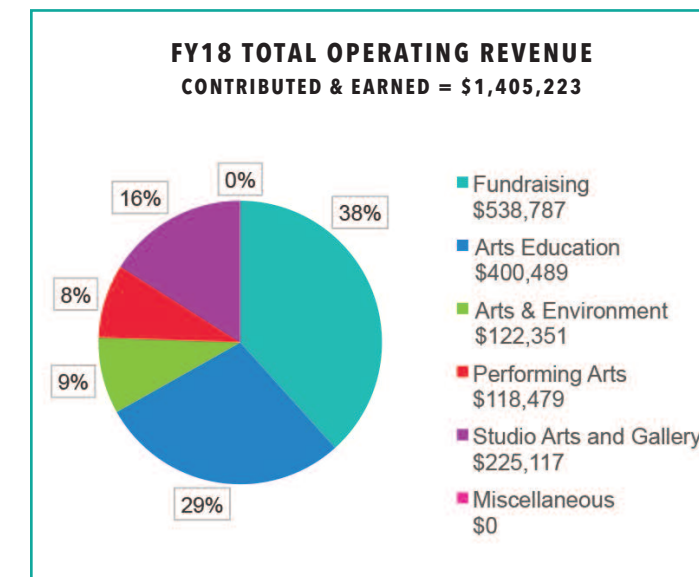
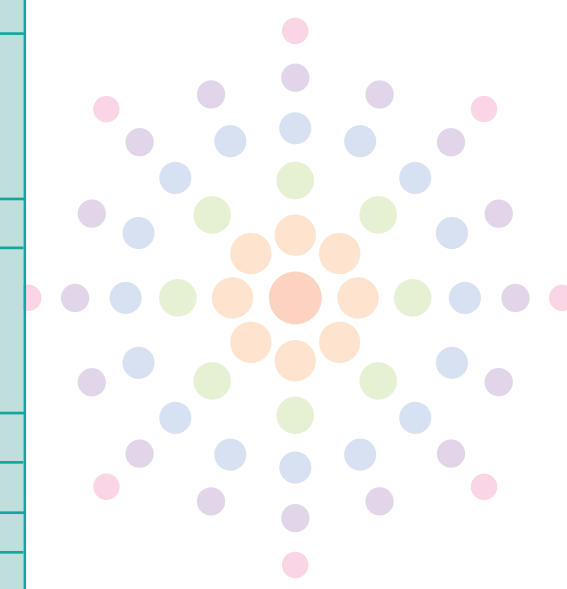
The **Arts Gallery** immersed us in the art of craftsmanship. Breaking the Mold: Contemporary and Traditional Craftsmanship celebrated Steven Kauffman's 50th anniversary as a guitar maker and challenged the way we view the guitar by fabricating the instrument as a work of art. From bookbinding to furniture making, the North Bennet Street School exhibit demonstrated their graduates' ability to employ traditional craftsmanship to develop contemporary practices for the modern age. Long-term studio artists, Andy Newman and Gregory Maguire, presented a joint exhibition of painting and writing in Parallel Paths. Our Speaker Series included Jean Lightman's fascinating look at painting in the Boston School tradition, and an intimate conversation with Newman and Maguire discussing their professional trajectories and providing a glimpse into their shared lives as artists.

The **Studio Arts Program** welcomed over 4,000 members of the public to our annual Winter Market, Open Studios and How-To events. The Studio Arts Program also supported Massachusetts native and 2017 RISD graduate, Elizabeth King, in the annual Artist-in-Residence program. King utilized our studios to create an entirely new body of work focused on drawing our attention to the visual language of brushstrokes and color. Trinity Episcopal Church accommodated King's large-scale paintings, which coincided with The Umbrella's renovations, "because of their ability to transform a space and entice people to take a longer look," and were subsequently featured in *Boston Magazine*. Our season ended early this year, marked by the artists moving out to start our transformation of well-loved, creative spaces into state of the art facilities for the fine and applied arts.

The Umbrella continued its **Concert Series** with sold out performances by THE FRAY in November 2017 and OLD CROW MEDICINE SHOW in June 2018. More than 2,000 people have attended our Benefit Concert Series over the past 3 years. **ARTRAGEOUS**, The Umbrella's annual fundraising gala, hosted by Joyce Kulhawik, and honoring the inspiring work of Jennifer Hurley-Wales, featured performances by incredibly talented Charles Yang and Eleanor Markey. Our sincere thanks to Gala Chair Ellen McHale and Honorary Co-chairs Gail and Matt Burr and Nancy Traversy and Martin Lueck. We appreciate their leadership and extend thanks to everyone who made this the most successful gala ever—raising more than \$190,000.

THE UMBRELLA FY18 FINANCIALS

CHANGES IN NET ASSETS	2018	2017
REVENUES		
Operating Revenue	678,831	747,331
Support Revenue (includes Campaign)	1,586,623	7,762,121
Investment Income	40,155	57,478
TOTAL REVENUE	\$ 2,305,609	\$ 8,566,930
EXPENSES		
Program Expenses	1,009,015	1,103,474
Management Expenses	150,838	168,611
Fundraising & Marketing Expenses	629,725	558,759
TOTAL EXPENSES	1,789,578	1,830,844
Increase (Decrease) in Net Assets	516,031	6,700,731
Net Assets at the beginning of the year	16,970,076	\$10,233,990
Net Assets at the end of the year	\$ 17,486,107	16,970,076



FY17 BY THE NUMBERS

- 4000+** Performing Arts attendees enjoyed 60+ plays, musicals, films, and concerts, including more than 50 sold out performances, 31 DASH Award nominations for our Performing Arts Program, with 11 DASH Award wins
- 4500+** people participated in the Arts & Environment Program's 55+ community celebrations, classes, events, and public art projects including the 2017 Art Ramble
- 1500+** children and adults attended **200+** classes, workshops, camps, events, and birthday parties
- 4000+** people attended Studio Arts Events including ArtTalks, Winter Market, and Open Studios
- 300+** participants and attendees supported The Umbrella at our annual **ARTRAGEOUS** fundraising Gala
- 285+** volunteers contributed **3,560+** hours of service