

THE UMBRELLA<sup>SM</sup>  
STAGE COMPANY

# 412<sup>ND</sup> STREET



## INAUGURAL SEASON

This production made possible by the generosity of  
Cast and Crew Members from The Umbrella Stage's Seasons 1-11

This 2019-2020 season is made possible by the generosity of  
Kate and Mark Reid in memory of Kate's mother, Micheline Sakharoff

40 STOW STREET, CONCORD, MA | [TheUmbrellaStage.org](http://TheUmbrellaStage.org)

**Adage**

Capital  
Management, L.P.

**Proud sponsor of  
THE UMBRELLA  
Community Arts Center**

**Best wishes  
for a successful  
2019-2020  
Performing Arts Season!**

ADAGE CAPITAL MANAGEMENT, LP  
200 CLARENDON STREET  
52nd FLOOR  
BOSTON, MASSACHUSETTS 02116  
PHONE: 617.867.2800  
[adagecapital.com](http://adagecapital.com)

THE UMBRELLA STAGE COMPANY PRESENTS



Music by  
HARRY WARREN

Lyrics by  
AL DUBIN

Book by  
MICHAEL STEWART & MARK BRAMBLE

Based on the Novel by BRADFORD ROPES

Original Direction and Dances by  
GOWER CHAMPION

Originally Produced on Broadway by  
DAVID MERRICK

Directed by Brian Boruta

Music Direction by James Murphy

Musical Restaging and New Choreography by Lara Finn Banister

Scenic Design by  
Benjamin D. Rush

Lighting Design by  
SeifAllah Sallotto-Cristobal

Sound Design by  
Elizabeth Havenor

Costume Design by  
Brian Simons

Properties Design by  
Sarajane Morse Mullins

Stage Managed by  
Michael T. Lacey

42ND STREET

is presented by arrangement with  
Tams-Witmark, A Concord Theatricals Company  
[www.tamswitmark.com](http://www.tamswitmark.com)

*The use of all songs is by arrangement with Warner Bros.,  
the owner of music publishers' rights*

---

Funded in part by the





Dear Friends,

Welcome to The Umbrella, where there's so much that's exciting and new to share with you!

Of course, we are beyond thrilled to introduce you to our two newly constructed theaters – part of a massive, multiyear renovation and expansion campaign that saw the transformation of every aspect of our Arts center.

We hope you will enjoy our comfortable and accessible, state-of-the-art theaters, open and airy lobby, vibrant art exhibition spaces, and convenient new ticketing, concession and restroom facilities. We're delighted to have a space that creates a complete audience experience worthy of the productions staged here.

Beyond just the facilities, technology and amenities, however, is the evolution of the work itself. We have endeavored to share **Bold, Daring and Innovative** theater with audiences for years, but now proudly bring it to the next level with the launch of The Umbrella Stage Company – Greater Boston's newest professional theater. New faces, new production talent, and exciting new titles including some regional premieres will further enhance the high quality audiences have come to expect from our award-winning Performing Arts Program.

And, we are pleased to join with other institutions and businesses in town to build a vibrant, welcoming cultural destination here in historic Concord Center. Our new *#DinnerAndAShowConcord* program invites arts patrons throughout the region to "make a night of it" here in town, enjoying special offers from hospitality partners listed later in this booklet.

At this exciting time of growth, we are grateful for your ongoing support of The Umbrella, and ask you to help us spread the word about this wonderful organization.



Jerry Wedge  
Executive Director

# 42<sup>ND</sup> STREET CAST

**Gillian Mariner Gordon\* as Peggy Sawyer**

**Todd Yard as Julian Marsh**

**Mickey T. White as Billy Lawlor**

**Aimee Doherty\* as Dorothy Brock**

**Daniel Forrest Sullivan as Andy Lee**

**Barbara Pierre as Maggie Jones**

**Ryan Malyar as Bert Barry**

**Ashley Nicole Martin as Anytime Annie**

**Temma Beaudreau as Lorraine**

**Rachel Tata as Phyllis**

## WITH

**John Breen      Alden Gagnon**

**Chris DiOrio      Jackson Jirard**

**Cara Guappone      Thom Hardy**

**Gordon Ellis      Erica Lundin**

**Will Fafard      Nick Osborne**

**Hannah Shihdanian**

\* Appearing through an Agreement between this theater and Actor's Equity Association, the Union of Professional Actors and Stage Managers in the United States.

**Actors' Equity Association** ("Equity"), founded in 1913, is the U.S. labor union that represents more than 51,000 professional Actors and Stage Managers. Equity fosters the art of live theatre as an essential component of society and advances the careers of its members by negotiating wages, improving working conditions and providing a wide range of benefits, including health and pension plans. Actors' Equity is a member of the AFL-CIO and is affiliated with FIA, an international organization of performing arts unions.

Equity is governed by its own members through an elected Council, representing principal actors, chorus actors and stage managers living in three regions: Eastern, Central and Western. Members at large participate in Equity's governance through a system of regional Boards and Committees. Equity has 28 designated area liaison cities with over 100 members each.



# 42<sup>ND</sup> STREET ORCHESTRA

James Murphy, Conductor

Samantha Prindiville, Piano

Cezar Garde, Drums/Percussion

Ben Stevens, Bass

Jeff Leonard, Reed I

Jean Pace, Reed II

Todd Brunel- Reed III

Thomas Carroll, Reed IV

Beth Goodman, Reed V

Erika Izaguirre, Trumpet I

Dani Garcia, Trumpet II

Rick Copeland, Trombone I

Emma Staudacher, Horn

This performance features  
moving lights and other special effects.

Any patrons with concerns  
about these effects should please ask  
for a member of house management.

[TheUmbrellaStage.org](http://TheUmbrellaStage.org) | 978.371.0820

# 42<sup>ND</sup> STREET MUSICAL NUMBERS

## ACT I

"Overture" - Orchestra

"Audition" - Dancers

"Young and Healthy" - Billy and Peggy

"Shadow Waltz" - Maggie, Dorothy, and Girls

"Shadow Waltz (Reprise)" - Dorothy

"Go into Your Dance" - Maggie, Peggy, Annie, Phyllis, Lorraine, and Andy

"You're Getting to Be a Habit with Me" - Dorothy and Dancing Company

"Getting Out of Town" - Maggie, Bert, Pat, and Chorus

"Dames" - Billy and Chorus

"I Know Now" - Dorothy, Chorus and Billy

"We're in the Money" - Annie, Phyllis, Lorraine, Peggy, Billy, and Chorus

"Act One Finale" - Dorothy and Orchestra

## ACT II

"Entr'acte" - Orchestra

"There's a Sunny Side to Every Situation" - Chorus

"Lullaby of Broadway" - Julian and Company

"Montage" - Julian, Andy, Peggy and Dancing Company

"About a Quarter to Nine" - Dorothy and Peggy

"Shuffle Off to Buffalo" - Maggie, Bert, Annie, and Girls

"Forty-Second Street" - Peggy with Dancing Company

"Forty-Second Street (Reprise)" - Julian

# Letter From The Director of Performing Arts:

Greetings!

It gives me great pleasure to be able to finally welcome you all to this production of *42nd Street*, which marks the first in this beautiful new facility. For the past several years now, our vision of creating a regional destination for the arts in Concord has been a labor of love and a source of joy and hope for me and many others as we worked to realize a transformed future for this incredible organization.

No production could be more appropriately suited to mark this occasion than *42nd Street*, which, at its core, is a celebration of musical theatre and the people who make it happen; of the grit and determination it takes to realize a vision. But it is also about hope and joy; about chasing a dream and believing in oneself and others. It doesn't take much effort to draw a striking parallel between the story of *42nd Street* and the story of this beautiful new facility.

*42nd Street* has a long and storied history, and remains safely ensconced in the canon of classic musical theatre. Yes, because of the music, yes (of course) because of the dancing, but also because of Peggy Sawyer herself, as she dares to hope against impossible odds and to open-heartedly chase a dream. Some of the most successful productions of *42nd Street* have been set against uncertain times, and in uncertain times, what the world needs is a few more Peggy Sawyers.

We have so much planned for this season both here and in our new Black Box Theater just upstairs from where you are sitting now. In November we welcome back Michelle Aguillon (*Disgraced*, *To Kill A Mockingbird*, *The Joy Luck Club*) as she directs August Wilson's *Fences*. In December Elliot Norton Award winner Nancy Curran Willis directs *Tuck Everlasting*. In January we bring you the Regional Premiere of the folk-punk musical *Hundred Days*. In March, Peyton Pugmire (*La Cage Aux Folles*) returns to stage a powerful rendition of Martin Sherman's *Bent*, and we close the season in April when Julia Deter (*Hedwig and The Angry Inch*) returns to mount one of the first regional productions of the musical *War Paint* starring Boston's own leading ladies Leigh Barrett and Shana Dirik.

Season subscriptions are on sale now, and I hope to see you all at many more performances to come. Thank you for being a part of this incredible moment.

See you at the theater!

A stylized, handwritten signature in black ink, appearing to read 'B Boruta'.

Brian Boruta, Director, The Umbrella Performing Arts



# WHO'S WHO IN 42<sup>ND</sup> STREET



**Temma Beaudreau** (*Lorraine*) is thrilled to be making her Umbrella debut in *42nd Street*! She has recently appeared as Penny Pingleton in *Hairspray* and Sister Mary Robert in *Sister Act* at the Stadium Theatre, as

well as sang backup for Josh Groban on his Bridges Tour. Temma is a graduate of Emmanuel College, where she received three nominations from the Kennedy Center American College Theatre Festival for the Richard Maltby Jr. Award for Musical Theatre Excellence (*The Little Mermaid*, *Disaster!*, *A Day in Hollywood/A Night in the Ukraine*). Temma grew up as a competitive dancer, and it feels so full circle that her first professional production is such an iconic dance show. Many thanks to Brian Boruta, and much love to her family and friends for their endless support.



**John Breen** (*Ensemble*) is overjoyed to be making his Umbrella debut in *42nd Street*! Credits include *The 25th Annual Putnam County Spelling Bee* (Weston Friendly), *Avenue Q* (TCAN), *A Christmas*

*Carol* (NSMT), *Cinderella* (NSMT), and *The Wizard of Oz* (NSMT). When John is not on stage, you can find him decorating specialty cakes at Cakes By Design Edible Art in North Andover, MA. Many thanks to The Umbrella for having him!



**Chris DiOrto** (*Abner Dillon*). This is Chris' first show with The Umbrella; hopefully, it won't be the last. Most of his work has been on the South Shore, with favorite recent roles being Nicely-Nicely (Cohasset), Shrek

(Hingham), Thenardier (Riverside Theatre Works), and Pseudolus (RTW). A trial

lawyer by day, he's happy any time he gets a chance to perform before an audience that can't send his client to state prison. Thanks to Lace for the faith, and to all the production team for giving me a chance to check another box on my bucket list: performing on the same stage as Aimee Doherty.



**Aimee Doherty\*** (*Dorothy Brock*) is excited to make her Umbrella debut! Regional: Gussie in *Merrily We Roll Along*, Yvonne/Blaire in *Sunday In The Park With George* and Mrs. Segstrom in *A Little Night*

*Music* (Huntington Theatre), Rosalind in *As You Like It* (Shakespeare & Company), Delphinia in *Love and Other Fables* (Theatre By The Sea), Maria in *The Sound of Music* (Reagel Music Theatre), Sally in *Cabaret* (Moonbox Productions), among others. Aimee soloed with the Boston Pops under the baton of Keith Lockhart in the Leonard Bernstein Centennial Tribute concert series. She is a two-time recipient of the Elliot Norton Award for Outstanding Actress in a Musical and three-time recipient of the IRNE Award for Outstanding Actress in a Musical. Next: Sibella in *A Gentleman's Guide to Love and Murder* at Lyric Stage. AimeeDoherty.net



**Gordon Ellis** (*Pat Denning*) was previously seen on The Umbrella stage in *Glengarry Glen Ross* (Williamson) and *True West* (Lee). Other area credits include: *Funny Money* (Henry Perkins), *Terra Nova*

(Bill Wilson), *Mauritius* (Dennis), *Of Mice & Men* (Carlson), *The Shape Of Things* (Adam) (DASH Award for Best Actor) with Quannapowit Players, *Sister Act* (Monsignor) with Next Door Theater, *God Of Carnage* (Michael Novak), *First Night* (Danny) with Acme Theater, *The Memory*



**C.E. Floyd Company, Inc.**

*general contractor / construction manager*

**We're excited to support The  
Umbrella's programs!**



**Enjoy your upgraded space!**

NEVER SHIRK  
SERVICE ABOVE ALL ELSE  
PREPARE FOR SUCCESS  
FIRM BUT FAIR  
WORK HARD / PLAY HARD

**PERFORMANCE  
WITH  
INTEGRITY**

[www.cefloyd.com](http://www.cefloyd.com)

# WHO'S WHO IN 42<sup>ND</sup> STREET

of *Water* (Frank), *Sherlock Holmes: The Final Adventure* (Dr. Watson), *Almost, Maine* (multiple) with Vokes Players, *Doubt: A Parable* (Father Flynn) with Lexington Players, *Mister Roberts* (Ensign Pulver), *Lend Me a Tenor* (Bellhop) with Concord Players, *November* (President Smith) with Hovey Players, *Moonlight & Magnolias* (David O. Selznick), *The Laramie Project* (multiple) with AFD Theater, *One Before Forty* (Kevin Gable) (EMACT Award for Best Actor) with Curtain Call Theater. He is also an award-winning director.



**Will Fafard** (*Ensemble*) is so excited to be making his debut at The Umbrella! He was last seen on the Marblehead Little Theater stage as Eddie in *Mamma Mia*. Professional roles include: Coricopat

(*Cats*), Bobby (*Hairspray*), with PDP, Kittery, Maine, Michael Banks U/S, Kiteboy (*Mary Poppins*) Ogunquit playhouse, Turkey Boy (*A Christmas Carol*) with NSMT, and many more! Will is entering his freshman year in college and is planning to major in musical theatre. He would like to thank his entire family, and friends for their love and support!



**Alden Gagnon** (*Ensemble*) is an NYC-based and New Hampshire-raised singer, actress, and dancer. Her most recent, select credits include Joan of Arc/WARRIOR (orig.) in *Faith in Shackles* (NYC

Summerfest/Hudson Guild), an ensemble dancer in *Time it Is: To Music* (Theatre for the New City), Vomma (orig.) in *Anxiety Stew* (The Cherry Lane Theatre), and ensemble in *Spamalot* (The Barnstormers Theatre). She studied and received an Artist's Certificate in Acting at the Tom Todoroff Acting Conservatory in NYC. She also received a Certificate of Excellence in

Tap & Theatre from the Broadway Dance Center Training Program. In her spare time, Alden is also a Certified Crystal Healer and has her own practice. Love to her supportive family (both human and animal), and partner, Diego. Instagram: @aldengagnon AldenGagnon.com



## Gillian Mariner Gordon\*

(Peggy Sawyer) is making her debut at The Umbrella. Other credits include: *Kay in The Night Watch* (Gamm Theatre); *Clipped in Dark Room* (Bridge Rep); Julie in *College Colors*

(Crossroads Theatre Company); *Melody in Bad Jews* (SpeakEasy Stage Company); Kathy in *Singin' in the Rain*; Liesl in *The Sound Of Music* and Hodel in *Fiddler on the Roof* (Reagle Music Theatre); Belle in *A Christmas Carol* (North Shore Music Theatre) and Sparkle Motion in *Donnie Darko* (American Repertory Theater). Film: *Chappaquiddick*, *American Woman*. With thanks to Brian, James, Lara and all at The Umbrella Stage Company. GillianMarinerGordon.com



## Cara Guappone

(*Ensemble*) is absolutely delighted to be back at The Umbrella as part of the debut production in this incredible new space. She has fond memories of The Umbrella in the days

before the air conditioning playing Josephine Bloom in *Big Fish* and Mae in *The Wild Party*. Other credits include Emily Webb, *Our Town* and Heather McNamara, *Heathers The Musical* (The Footlight Club); Sally Brown, *You're A Good Man Charlie Brown* (Footlight 7A); Little Sally, *Urinetown* (Longwood Players); Marcy Park, *Spelling Bee* (Moonstruck Theater); Suzanne, *Picasso at the Lapin Agile* (Wellesley Players); Amy, *Company* (Weston Friendly); Daisy Buchanan, *The Great Gatsby*



## WORKING TOGETHER TO BUILD STRONGER COMMUNITIES

Since 1855, Salem Five has been listening to the needs of our communities. In keeping with that commitment, we are pleased to support **The Umbrella Stage Company's** production of "42nd STREET."

LOCATED IN CONCORD

195 Sudbury Road  
978.287.9584

# SalemFive®

CHARITABLE FOUNDATION

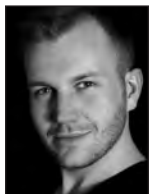
[salemfive.com](http://salemfive.com) | 800.4SALEM5



Member FDIC. Member DIF

# WHO'S WHO IN 42<sup>ND</sup> STREET

(Moonstruck Theater); Liesl, *The Sound of Music* (Footlight Club). She is the co-founder and managing director of The Opposite of People: A New-ish Theater Company, and by day she works as a Graphic Designer and User Experience designer in Boston. CaraGuappone.com



**Thom Hardy** (*Ensemble*) has been seen on The Umbrella stage in *Big Fish* (ensemble - DASH Award "Best Production - Musical"), *The Wild Party* (Phil), and *La Cage Aux Folles* (Hanna - ArtsImpulse

award "Best Specialty Ensemble"). Other favorite roles include: Peter Allen in *The Boy From Oz* and Mike in *A Chorus Line* (Arlington Friends of the Drama); Emcee in *Cabaret*, Corny Collins in *Hairspray*, and Carmen Ghia in *The Producers* (Theatre at the Mount); and Mark in *The Shadow Box* (Theatre III). Thom has also directed and/or choreographed for Salem High School, Burlington Educational Summer Theatre, Clark University, Theatre at the Mount, and Worcester County Light Opera. Thom sends his thanks to his biggest fan: "I love you mother!"



**Jackson Jirad** (*Ensemble*) New Orleans-born and Pennsylvania-raised, Jackson is now a Bostonian artist/educator. He received his BA in Psychology from Stanford University, M.Ed in Human Development

and Psychology from Harvard Graduate School of Education, and has been researching power, responsibility, and communication in the workplace for four years. He's danced professionally with Ballet Austin in Texas, Sacramento Ballet in California, and Jose Mateo Ballet Theatre here in Massachusetts. This season sees Jackson transitioning from ballet to musical theater, and he is super excited

to start this new journey off with The Umbrella Stage Company's *42nd Street* production.



**Erica Lundin** (*Ensemble*) was last seen at The Umbrella in the Dance Ensemble of *Singin' In The Rain*. She also played a member of the Chorus in *Orlando* (Suffolk University); Bebe in *A Chorus Line*

(Arlington Friends of the Drama); and Dance Ensemble in *Singin' In The Rain* (Reagle Music Theatre). Erica would like to thank The Umbrella and the *42nd Street* team for the opportunity to tap her heart out! She would also like to shout out her amazing friends and family for their support and love! GET OUT YOUR TAP SHOES, FRANCIS!



**Ryan Malyar** (*Bert Barry*) is excited to be a part of The Umbrella Stage Company as they debut this fabulous new theatre space. Past performances include *Disney on Classic* (Japan Tour); Patsy in *Spamalot* (The Palace

Theatre); *The Mousetrap* (Barnstormers Theatre); and *ImaginOcean* (Sydney Opera House). Love to Bryan, the Malyars, and the Tarlachs!



**Ashley Nicole Martin** (*Anytime Annie*) is honored to be making her Umbrella Stage Company debut by tap dancing around this gorgeous new theater! She previously played Lorraine Flemming in

*42nd Street* at Weathervane Playhouse and is thrilled to be returning to her favorite show for a second time. She has also performed in and as dance captain for *A Chorus Line*, *Pippin* (Weathervane



A business of Morgan Stanley

## Graystone Consulting is Proud to Support The Umbrella Community Arts Center

Graystone Consulting is focused solely on your results; providing a sophisticated framework and disciplined approach to help guide investment decisions while supporting your goals and risk parameters. Our comprehensive advice, delivered locally by experienced Graystone Consulting investment consultants, can help your organization be poised to support its causes for years to come.

For more information about how our depth of resources and local presence can help your organization meet its financial objectives, please call today.

### **Ned Dubilo**

Director  
Financial Advisor  
[ned.dubilo@mgraystone.com](mailto:ned.dubilo@mgraystone.com)

### **Frank Hill CIMA®**

Director  
Financial Advisor  
[frank.hill@mgraystone.com](mailto:frank.hill@mgraystone.com)

The Dubilo Hill Group  
at Graystone Consulting  
53 State Street, 39th Floor  
Boston, MA 02109  
617-589-3226  
800-752-2678  
[www.morganstanleygc.com/dubilahillgroupsb](http://www.morganstanleygc.com/dubilahillgroupsb)



# WHO'S WHO IN 42<sup>ND</sup> STREET

Playhouse) and *Elf* (Surflight Theatre). Other favorite credits include *South Pacific*, *Show Boat* (Arizona Broadway Theatre), *White Christmas* (Arts Center of Coastal Carolina), *Hairspray* (Surflight Theatre), and *Footloose* (Laguna Playhouse), NYC: *Wonderland* (York Theatre Company/MMC). Special shoutout to her incredibly supportive family and friends for always being there. Proud MMC grad. Proud Instagrammer @ashwithasplash.



**Nick Osborne** (*Mac*) is thrilled to be back in Concord for The Umbrella's exciting new chapter. Recent credits: *Cabaret*, *Pippin* (Footlight Club), *Gross Indecency* (Longwood Players), *Parade* (Umbrella),

*Hamlet* (Brown Box Theatre Project), *Amadeus* (Moonbox Productions), *A Man of No Importance* (Bad Habit Productions), *The Rocky Horror Show* (Salem Theatre). Northeastern grad and NTI alum (Eugene O'Neill Center).



**Barbara Pierre** (*Maggie Jones*) was last seen at The Umbrella as Gary Coleman in *Avenue Q*. She is beyond thrilled to now be taking part in The Umbrella Stage Company's inaugural season. Barbara has also

played Minola McKnight in *Parade* at The Umbrella, which received DASH Awards including Best Musical Production. She recently won a DASH Award for the role of Sebastian in *Little Mermaid* (NCT). Other credits include Mama Morton in *Chicago* (Vokes Theater); Brenda in *Smokey Joe's Cafe* (M.M.A.S.); and Gilmer in *Godspell* (Amazing Things Art Center). Barbara would like to thank her friends, family, and loved ones for their endless support.



**Hannah Shihdanian** (Ethel/Dance Captain) is over the moon to debut the first show in the new theatre! Hannah's previous Umbrella credits include: *The Wild Party* (Ensemble/Dance Captain), *Bloody Bloody*

*Andrew Jackson* (Soloist/Dance Captain), *A Chorus Line* (Sheila), *La Cage Aux Folles* (Choreographer), *Jesus Christ Superstar* (Choreographer). Hannah moved to TX in 2018, where she teaches dance for adults and works as a Choreographer and Performer. Her other favorite New England credits include: *The Donkey Show* with the A.R.T. (Tytania/Dance Captain), *Mame* with Greater Boston Stage Co. (Cousin Fan), *A Chorus Line* with Reagle Music Theater (Bebe), *West Side Story* with Hackmatack Playhouse (Rosalia), *Acoustica Electronica* with ToUch Performance Art (NYC & Boston Cast). Her favorite credit is playing "Mom" to Jaime and Bella Rose. Special thanks to her husband Aidan for constantly supporting her adventures in the Theatre.



**Daniel Forest Sullivan** (*Andy Lee*) was last onstage at The Umbrella as Al in *A Chorus Line*. A Boston-based performer, director, choreographer and costumer, he has also been seen onstage as Lt. Ward/US Drake/US

Bert Healy in *Annie* (National/International Tour), Henry Ford in *Ragtime*, and Horton in *Seussical* (Wheelock Family Theater), Max in *Cabaret*, and David in *Company* (Moonbox Productions), Jean Valjean in *Les Miserables*, and Frederick Barrett in *Titanic* (Woodland Theatre Company). Also this October, he choreographed Moonbox Productions' *Rocky Horror Show* performing in Harvard Square. Dan is currently Artistic Director of The Weston

## THE UMBRELLA HOSPITALITY PARTNERS

### ***Make a night of it!***

The Umbrella Stage Company is thrilled to return to our renovated home at 40 Stow Street with some amazing new local partners who want to help you get the most out of your night out (or matinee) in Concord Center! These partners offer special discounts for patrons with a day-of-show ticket from The Umbrella Stage Company. (Terms and conditions apply. Offers usually exclude taxes, gratuity, and alcohol.) See [TheUmbrellaArts.org/Partner-Offers](http://TheUmbrellaArts.org/Partner-Offers) or check with each partner for specific details and questions.

---



Trail's End Café  
97 Lowell Road, Concord, MA 01742  
978.610.6633



Concord's Colonial Inn  
48 Monument Square, Concord, MA 01742  
978.369.9200



Adelita  
1200 Main Street, Concord, MA 01742  
978.254.0710



Best Western at Historic Concord  
740 Elm Street Concord, MA 01742  
978.369.6100

---

To learn about the benefits of partnering with The Umbrella, contact Bridget at 978.371.0820 x212 or [Bridget@TheUmbrellaArts.org](mailto:Bridget@TheUmbrellaArts.org)

---



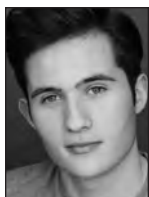
# WHO'S WHO IN 42<sup>ND</sup> STREET

Friendly Society, where he is Directing/ Choreographing the area premier of *Holiday Inn* this November. Love and thanks to MDJBN!



**Rachel Tata** (*Phyllis*) is so excited to be making her Umbrella Stage debut with *42nd Street*! Originally from Tampa, Florida, she is currently pursuing her BFA for Musical Theatre at the Boston Conservatory at

Berklee. There, she was most recently seen in Sondheim's *Frogs* and *Cabaret*. Some other favorite credits include: Wendla in *Spring Awakening* (Eight o'Clock Theatre), Urleen in *Footloose*, and Kim in *Bye Bye Birdie*. Special thanks to all her friends and family for their constant support and love!



**Mickey T. White** (*Billy Lawlor*) Umbrella Stage Debut! Goodspeed Opera House: *The Peculiar Tale of the Prince of Bohemia* and *the Society of Desperate Victorians* (Prince of Bohemia). Interlakes Theatre: *Newsies* (Jack

Kelly). Maine State Music Theatre: *The Who's Tommy* (Tommy), *Newsies* (Morris Delancey). Woodstock Playhouse: *Pippin* (Pippin). FPAC: *The Little Mermaid* (Prince Eric), *Mary Poppins* (Bert). Norwell Company Theater: *Spring Awakening* (Melchior) - Regional Premiere. Boston Conservatory: *Little Women* (Laurie), *Shrek* (Wolf). Wheelock Family Theatre: *Beauty and the Beast* (Ensemble). Mickey is a graduate of The Boston Conservatory at Berklee - (BFA) Musical Theater.



**Todd Yard** (*Julian Marsh*) is proud and excited to debut with *The Umbrella* in their new space and incarnation, having previously performed with the company in *La Cage aux Folles* (Albin/Zaza)

and *Ragtime* (Tateh). He was most recently seen in Boston as Bruce in *Fun Home* at Speakeasy Stage. Other Boston credits include *Barnum* (PT Barnum) and *The Wild Party* (Burrs) with Moonbox Productions, *Company* (David) and *Gypsy* (Uncle Jocko) at Lyric Stage, *Man of La Mancha* (The Governor/Innkeeper) at New Repertory Theatre, and *Carousel* (Jigger) and *Oklahoma!* (Ali Hakim) at Reagle Music Theatre. Outside of Boston, Todd appeared earlier this year as Dad in Seacoast Repertory Theatre's production of *Billy Elliot* and Frank Sr. in *Catch Me If You Can* at the New London Barn Playhouse, both in NH. Todd is a graduate of Mountview Academy of Theatre Arts in London. Love to Lydian and the girls.



# 2019-20 STAGE COMPANY TICKETS

## \$19-\$49

Typical performance schedule:

Thursdays at 7:30pm, Fridays & Saturdays at 8pm, Sundays at 3pm

### SUBSCRIBE TODAY YOUR WAY

Flexible Seating & Scheduling Options at the Best Prices

978-371-0820 | [TheUmbrellaArts.org/boxoffice](http://TheUmbrellaArts.org/boxoffice)

### PREMIER SUBSCRIPTION (Our BEST Value!)

15% off single ticket prices for all 6 shows with pre-selected seating, complimentary ticket exchanges, concession discounts, and special subscriber events. Plus 2 Bring-a-Friend comp vouchers!

### CURATE YOUR OWN SUBSCRIPTION (Custom Tailored!)

10% off single ticket prices for 3, 4 or 5 shows with pre-selected seating, complimentary ticket exchanges, concession discounts, and special subscriber events!

### FLEX PASSES (Ultimate Flexibility!)

10%-15% off single ticket prices (depending on choice of seating) for 3, 6, or 12 tickets which can be redeemed and scheduled at any time later - used individually or transferred to friends - plus complimentary ticket exchanges. The ultimate in flexibility!

### GROUP TICKETS

10% off Groups of 10-14 and 15% off Groups of 15 or more



Find the best pricing, scheduling and seating options  
at our 40 Stow Street Box Office (open 12-4pm M-F  
and 2 hours prior to performances), 978.371.0820  
or [TheUmbrellaArts.org/boxoffice](http://TheUmbrellaArts.org/boxoffice)

[TheUmbrellaStage.org](http://TheUmbrellaStage.org) | 978.371.0820

# WHO'S WHO IN 42<sup>ND</sup> STREET



**Brian Boruta** (Producer, Director) *42nd Street* marks Brian's 35th production with The Umbrella and his 32nd as the Director of Performing Arts, during which time he has earned Best

Production nominations for *Glengarry Glen Ross*, *Bloody Bloody Andrew Jackson*, *Red*, *Angels in America*, *Equus* and *Bonnie & Clyde*; a DASH Award for Best Play for *True West* and *To Kill A Mockingbird*, and Best Musical for *Parade* and *Big Fish*. Umbrella directing credits include: *Parade* (Dash Award for Best Director of a Musical) *Big Fish* (DASH Nom.), *Hair*, *Evita*, *Side Show*, *Next to Normal*, *The Rocky Horror Show*. Elsewhere: *Sweeney Todd*, *Legally Blonde*, *Godspell*, *Seussical the Musical*, *The Actor's Nightmare*, *Sister Mary Ignatius Explains It All for You*. Favorite on-stage credits include Billy Lawlor in *42nd Street* (DASH Nom.), Judas/ John the Baptist in *Godspell*, Cosmo Brown in *Singin' in the Rain*, Austin in *True West*, and Greg in *A Chorus Line*. As a designer and educator, Brian has worked with numerous college, high school and community groups including Merrimack College, Goddard College, Framingham State University, The Performing Arts Center of MetroWest, Brookline, Chelsea and Wellesley Public School. His solo piece, *UnMasqued*, has been workshopped and performed at the Wheeler Theater in Port Townsend, WA. Brian holds a Master of Fine Arts in Interdisciplinary Arts from Goddard College and was named the recipient of the 2014 Framingham State University Young Alumni Achievement Award for his work in the performing arts.

**Lara Finn Banister** (Choreographer) is thrilled to be a part of this first production in The Umbrella's beautiful new theatre. She has choreographed for The Umbrella since 2014, beginning with *Bloody, Bloody Andrew Jackson*. Since then, she has worked on *Evita*, *Hair*, *The Wild Party*, *Big Fish*, *Working*, and most recently *Avenue Q*. Lara also appeared onstage as a Cagelle in The Umbrella's 2015 production of *La Cage Aux Folles*. Additionally, Lara has worked as a choreographer with local high schools, colleges and community theaters and she has been nominated multiple times for a DASH award for Best Choreography. Lara is a Licensed Mental Health Counselor and earned her M.A. from Lesley University in Dance/Movement Therapy, as well as a B.A. from Emory University in Dance/Movement Studies and Sociology. She has traveled the world as an entertainer with Royal Caribbean Cruise Lines and currently works at a therapeutic school for children with special needs.

**Elizabeth Havenor** (Sound Designer) This is Elizabeth's fourth season and tenth production with The Umbrella, having previously sound designed *Avenue Q*, *Working*, *Glengarry Glen Ross*, *Parade*, *The Curious Incident of the Dog in the Night* and *Hedwig and the Angry Inch*, and the Best Sound Design DASH Award-nominated *Equus*, *Big Fish*, and *To Kill a Mockingbird*. She has a degree in theatre from the University of Wisconsin and a degree in Music Production & Recording Engineering from McNally Smith College of Music in St. Paul, MN. She has worked with numerous theatres from Central Mass to Boston as a sound designer, director and actress. In her other life, Elizabeth is deeply embedded in the music scene in Providence, RI, where she DJ's for several clubs and hosts concerts in the premier rock club, Fete Music Hall.

# THE UMBRELLA FALL EXHIBITIONS

---



**SEP 1 - NOV 1**

**Earth Press Project: Witness**

at Minute Man National Historical Park  
Visitor Center, Lexington

Publicly-generated sculpture project by  
Nancy Winship Milliken Studio

*[TheUmbrellaArts.org/Witness](http://TheUmbrellaArts.org/Witness)*



**SEP 1 - NOV 1**

**2019 Art Ramble: Witnessing Change**

at Fairyland Pond, Hapgood Wright Town  
Forest, Concord

Annual outdoor public art installation in  
collaboration with the Concord Natural  
Resources Division

*[TheUmbrellaArts.org/Ramble](http://TheUmbrellaArts.org/Ramble)*



**SEP 26 - NOV 3**

**StoryArt: Children's Book Illustration**

at The Umbrella Arts Gallery, Concord

Work by award-winning and published  
illustrators Priscilla Alpaugh,

Sarah S. Brannen, Shawn Fields,

Wayne Geehan, Brian Lies, Julia Miner,

Ilse Plume, Nicole Tadgell

*[TheUmbrellaArts.org/StoryArt](http://TheUmbrellaArts.org/StoryArt)*



THE UMBRELLA<sup>SM</sup>

DISCOVER YOUR ARTS

40 Stow Street, Concord, MA 01742

**[TheUmbrellaArts.org](http://TheUmbrellaArts.org)**

# WHO'S WHO IN 42<sup>ND</sup> STREET

**Michael T. Lacey** (Stage Manager) is thrilled to be back with The Umbrella Stage Company after stage managing award-winning musicals *Parade* (DASH Best Musical nominee) and *Big Fish* (DASH Best Musical winner). Other stage management includes *Circle Mirror Transformation* (Burlington Players - DASH nominee), *Dirty Rotten Scoundrels* (Burlington Players) and *42nd Street* (Winthrop Playmakers). Newly minted Brooklynite. Thanks to Brian, Cathie, Jerry, cast, crew, team and, of course, Margie. As always, for Tommy and Henry. MAMBO!

**Sarajane Morse Mullins** (Properties Designer/Set Dresser) is a Boston-based actor, educator, and designer. Previously at The Umbrella she designed properties for *Glengarry Glen Ross* (Dash Nomination) and *Joy Luck Club*. Past appearances on The Umbrella Stage include Lucille in *Parade* (Dash Nomination), Blanche Barrow (Arts Impulse nomination, DASH nomination) in *Bonnie and Clyde*, and ensemble roles in *Big Fish* and *Evita*. Sarajane holds a BFA in Theater Arts from Boston University and trained abroad with the London Academy of Music and Drama (LAMDA). She has appeared at The Huntington Theatre Company, Greater Boston Stage Company, Turtle Lane Playhouse, The Round Barn Theatre and over 50 productions in the Midwest. She has directed, designed or taught theater for over 20 schools and programs in the greater Boston area including UMASS Boston, Winchester Music School, Somerville Community Schools, and Kidstock! Creative Theater. Officially-sarajane.com

**James Murphy** (Music Director) was last seen at The Umbrella behind the baton for *Avenue Q*. Other Umbrella MD credits include *Parade*, *Big Fish* (both shows, DASH winner, Best MD), as well as *Hair*, *Side-*

*Show*, and *Superstar*. With his Bachelors of Music in Vocal Performance from The Boston Conservatory and Masters of Music Ed. from Anderson University, James has a voice studio in Burlington, MA. Find him on Facebook: @JMurphyVoiceStudio

**Cathie Regan** (Asst Stage Manager, Performing Arts Program Assistant) is delighted to be working on her tenth production at The Umbrella. Past stage managing gigs include *Avenue Q*, *Angels in America: Millennium Approaches*, *Angels in America: Perestroika*, *Evita*, *Bonnie & Clyde*, *Equus*, *Melancholy Play*, and *Glengarry Glen Ross*. Cathie has spent the last twenty years stage managing at various community theaters in the MetroWest area including The Winchester Players, The Concord Players, and Arlington Friends of the Drama. In 2019, Regan became Performing Arts Program Assistant for The Umbrella Stage Company.

**Benjamin D. Rush** (Scenic Designer) has spent 30 years working in all aspects of theatre: as a performer, director, designer, technician, and youth educator. Ben received formal training from both Florida School of the Arts (Performance) as well as the University of North Carolina School of the Arts (Scenic Technology). Recently his work has been seen on the creative team behind *America's Got Talent* (Assistant Creative Director) and *The Dai Show* (a new cirque spectacular for the DRAGONE company). Credits include Broadway, Off-Broadway, Regional, and Educational productions. Currently he is the Artistic Director of Wellesley Theatre Project, an arts academy. Follow him @benrush11.

**SeifAllah Sallotto-Cristobal** (Lighting Designer) has been designing continuously for over a decade. He holds an MFA in Lighting and Projection Design from the



Carol F. Wilson, CIC  
*President*

1150 Main Street  
Concord, MA 01742  
978.369.5656

[cwilson@northbridgeins.com](mailto:cwilson@northbridgeins.com)

*#1 Favorite Insurance Agency  
in Concord 2012*

## Draudt Design Architects

Thoughtful Design for Your Home



Learn more at [draudtdesign.com](http://draudtdesign.com)

# WHO'S WHO IN 42<sup>ND</sup> STREET

University of Missouri-Kansas City where he became one of the first students to study the art of projections for performance. His career has taken him across the country and has allowed him to design for many companies in Opera, Dance and Theatre. Seif works full time at Advanced Lighting & Production Services (ALPS) in the Sales Department and is fortunate that his full time career allows him to continue designing. Seif would like to thank his amazing wife for her unwavering support.

**Brian Simons** (Costume Designer) has worked as a director, choreographer, designer, actor and vocalist with many theater companies in the Southeastern Massachusetts area. Brian attended Bridgewater State University, where he studied Theatre Arts. As a director and designer Brian has worked with local area high schools including Oliver Ames High School in Easton and Thayer Academy in Braintree. In addition, Brian has worked with a number of local community theatre groups including the Star Players of Massachusetts, The Umbrella, and Family Performing Arts Center at Bridgewater State University.



## *Dance Prism 2019-20 Season*

### **The Little Mermaid**



Perf Arts Ctr  
Littleton Oct 20  
Collins Ctr  
Andover Oct 27  
Sudbury date TBA  
*Post-perf reception!*



### *The* **Nutcracker**



11 performances  
Fall River Dec 1  
Sudbury Dec 8\*  
Littleton Dec 14  
Worcester Dec 15  
Andover Dec 21, 22  
\* date to be confirmed

### *In the Spring — A Tea Party with Alice in Wonderland*

Littleton, April 19, Andover April 26, more TBA

*Children invited to meet principal characters after all performances*


All tix: \$20 Ch, Stu, Sr, \$28 Ad • Group Discounts • Special Youth Group Programs

danceprismoffice@gmail.com **danceprism.com**

978-371-1038



# Arlington Friends of the Drama 2019-2020 Season

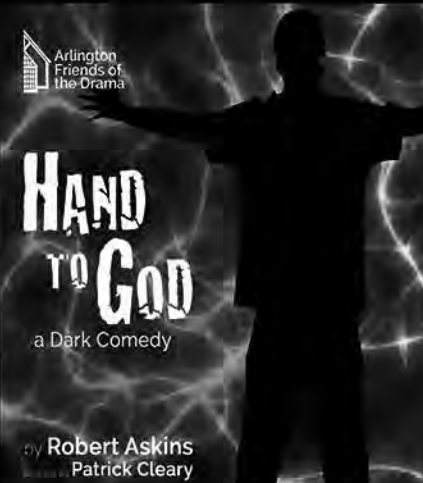


**THE ADDAMS FAMILY**  
a Musical Comedy

directed & choreographed by  
**Timothy Andrew**  
music supervisor: Danielle Clougher

book by MARSHALL BRICKMAN lyrics by TRICK ELLICE  
musical director by ANDREW LIPPA  
based on the characters created by Charles Addams

SEP 20 & 21 @ 8 PM SEP 22 @ 3 PM **\$25**  
SEP 27 & 28 @ 8 PM SEP 29 @ 3 PM 781-646-5922  
OCT 4 & 5 @ 8 PM OCT 6 @ 3 PM afdtheatre.org  
22 Academy Street Arlington MA



**HAND TO GOD**  
a Dark Comedy

by Robert Askins  
book and lyrics by Patrick Cleary

NOV 15 & 16 @ 8 PM NOV 17 @ 3 PM **\$20**  
NOV 22 & 23 @ 8 PM NOV 24 @ 3 PM 781-646-5922  
afdtheatre.org  
22 Academy Street Arlington MA

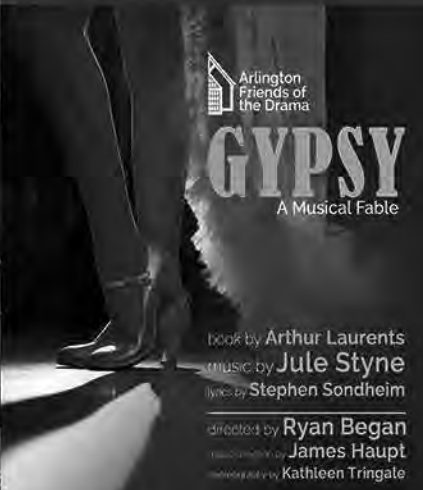


**LOVE'S LABOUR'S LOST**  
A New Musical based on the Play by William Shakespeare

music by Michael Friedman  
book adapted by Alex Timbers

directed by Katie Pickett  
Bethany Aiken  
Michael Hogman

MAR 6 & 7 @ 8 PM MAR 8 @ 3 PM **\$25**  
MAR 13 & 14 @ 8 PM MAR 15 @ 3 PM 781-646-5922  
MAR 20 & 21 @ 8 PM MAR 22 @ 3 PM afdtheatre.org  
22 Academy Street Arlington MA



**GYPSY**  
A Musical Fable

book by Arthur Laurents  
music by Jule Styne  
lyrics by Stephen Sondheim

directed by Ryan Began  
musical director by James Haupt  
executive producer by Kathleen Tringale

MAY 1 & 2 @ 8 PM MAY 3 @ 3 PM **\$25**  
MAY 8 & 9 @ 8 PM MAY 10 @ 3 PM 781-646-5922  
MAY 15 & 16 @ 8 PM MAY 17 @ 3 PM afdtheatre.org  
22 Academy Street Arlington MA





# AN EVENING WITH **LYLE LOVETT**

10TH  
CONCERT  
CELEBRATION  
TO  
BENEFIT  
THE  
UMBRELLA



**FRIDAY, OCTOBER 25TH, 2019**

Reception at 6:30pm | Concert at 8:00pm  
The Umbrella Main Stage, 40 Stow Street, Concord MA

**FOR TICKET INFORMATION: [TheUmbrellaArts.org/Concert](http://TheUmbrellaArts.org/Concert)**



THE UMBRELLA |  
DISCOVER YOUR ARTS

| 978.371.0820

# More Time for the Arts & Everything Else

Maintenance-free living at Newbury Court means more time to do all the things you enjoy doing. Renew your passion for painting; workout in our gym; swim in the indoor pool; visit your grandchildren.

***The possibilities are endless.***

For more information about our residential options, call **978-369-5155** or visit

**[newburycourt.org](http://newburycourt.org)**

100 Newbury Court  
Concord, MA 01742



*Abundant Life*

[facebook.com/NewburyCourt](https://facebook.com/NewburyCourt)



## 3EDGE

ASSET MANAGEMENT

*Combining scientific methodology with  
practical experience and sound judgment*

ONE INTERNATIONAL PLACE, SUITE 4430 | BOSTON, MA 02110 | [3EDGEAM.COM](http://3EDGEAM.COM)

# (Y)OUR NEW MAKERSPACE



## CALLING ALL MAKERS!

We're constructing an ALL-NEW Umbrella Makerspace at 40 Stow Street - three well-outfitted collaborative workspaces providing opportunities for independent and guided work in a wide range of maker disciplines and technologies, such as...

- Fabrication Lab: Laser Cutter, 3D Printing, CNC Router
- Digital Lab: Programming & Digital Design, Animation, Film & Photo
- Workshop: Glass, Woodworking, Metalwork, Robotics



Want to participate in our growing maker community, or interested in providing skilled instruction to others?

Contact [Education@TheUmbrellaArts.org](mailto:Education@TheUmbrellaArts.org) or 978.371.0820 x204, or see [TheUmbrellaArts.org/Makerspace](http://TheUmbrellaArts.org/Makerspace)



THE UMBRELLA<sup>SM</sup>  
ARTS EDUCATION

[TheUmbrellaArts.org/Education](http://TheUmbrellaArts.org/Education)

978.371.0820

[Education@TheUmbrellaArts.org](mailto:Education@TheUmbrellaArts.org)

# waterman<sup>DESIGN</sup>

GRAPHIC DESIGN & BRANDING SOLUTIONS

26 RIVERDALE CIRCLE

CONCORD MA 01742

978 369 3896

PW.STURGES@COMCAST.NET

WWW.PWATERMANDESIGN.COM

..... PRISCILLA WHITE STURGES

## **Kistler & Knapp Builders, Inc.**

916 Main Street, Acton, MA 01720

978-635-9700

- ❖ CUSTOM HOMES
- ❖ ADDITIONS & RENOVATIONS
- ❖ BOSTON TOWNHOUSE RENOVATIONS

LET US MAINTAIN YOUR  
HOME.. CONTACT OUR  
HOME SERVICES DIVISION

[WWW.KISTLERANDKNAPP.COM](http://WWW.KISTLERANDKNAPP.COM)



*"Thirty-five years of fine craftsmanship"*

# 42<sup>ND</sup> STREET

## PRODUCTION STAFF

Producer/Director.....	Brian Boruta
Music Director.....	James Murphy
Choreographer.....	Lara Finn Banister
Stage Manager.....	Michael T. Lacey
Scenic Designer.....	Benjamin D. Rush
Lighting Designer.....	SeifAllah Sallotto-Cristobal
Sound Designer.....	Elizabeth Havenor
Costume Designer.....	Brian Simons
Properties Designer.....	Sarajane Morse Mullins
Wig Designer.....	Johnny Cagno
Technical Director.....	Al Forgione
Rehearsal Accompanist.....	Samantha Prindiville
Dance Captain.....	Hannah Shihdanian
Deck Captain.....	Cathie Regan
Fly Captain.....	John Young
Scenic Charge.....	Page Evett
Run Crew/Dresser.....	Alicia O'Dwyer, Kayla Shimizu
Playbill Designer.....	Priscilla White Sturges
Volunteer Coordinator.....	Kathy Warren



*Where Shopping is an Old World Pleasure*

Hundreds of cheeses and wines to fit all occasions and budgets, plus a full service deli, serving pastries, lunches prepared foods and catering.

*Open Tuesday-Saturdays 10-5:50 at 29 Walden Street 978 369 5778*



# KIDSTOCK! CREATIVE THEATER

For every STAGE  
of IMAGINATION!

AUDITIONS  
DRAMA CLASSES  
VACATION WEEKS  
BIRTHDAY PARTIES  
STAGE PRODUCTIONS  
ENRICHMENT PROGRAMS

[Kidstocktheater.com](http://Kidstocktheater.com)

50 CROSS STREET, WINCHESTER MA 01890

# FREE DROP-IN FAMILY DAYS

Art Activities for All Ages

**#DiscoverYourArts**

Select Saturdays, 2-5pm

October 5, November 2, December 14

[TheUmbrellaArts.org/FamilyDays](http://TheUmbrellaArts.org/FamilyDays)



Best Western - Concord  
740 Elm St. - Concord, MA 01742  
Reservations: (800) 780 - 7234  
Hotel Direct: (978) 369 - 6100

Complimentary Hotel Amenities:  
Hot American Breakfast  
WiFi/High Speed Internet  
In room + Lobby Coffee Service  
Outdoor Pool & Guest Laundry  
On Site Fitness Center  
Papa Razzi's Restaurant Next Door



## Let us give you a reason to be cheerful

Reasons to be Cheerful, voted  
Concord's best homemade ice cream  
featuring 30 fantastic flavors and  
specials that rotate daily.

Stop by for free samples and  
the best scoop in town!

110 Commonwealth Avenue  
Concord, MA 01742

f @cheerfulreasons



Follow us online for the newest  
flavors and updates on where  
to find the Chillwagon, the  
coolest ice cream on wheels!

[www.cheerful-reasons.com](http://www.cheerful-reasons.com)



## WORLD LANGUAGES FOR AGES 3 TO 103

FRENCH, GERMAN, SPANISH  
ITALIAN, ARABIC, AND MORE.

CLASSES, SPECIAL EVENTS,  
BIRTHDAY PARTIES, STORY TIMES.

*"Do you know what a foreign  
accent is? It is a sign of bravery."*

– Amy Chua

234 Littleton Rd, Westford MA  
[FunWorldLanguageAcademy.com](http://FunWorldLanguageAcademy.com)

## LandVest | CHRISTIE'S

INTERNATIONAL REAL ESTATE

REAL ESTATE | TIMBERLAND | CONSULTING



### WHY WORK WITH US? WE CAN HELP YOU MAKE INFORMED DECISIONS

#### If you are Selling

We'll update you about your market and how it  
affects your property value

#### If you are Buying

We offer spectacular properties for sale throughout  
New England and beyond

#### If you need Consulting

We provide land planning, appraisal, & project  
management for owners of significant real estate assets.



Terry Maitland | J. Stanley Edwards | Ruth Kennedy Sudduth | Stewart Young  
Wade Stanian | Abby Gurall White | Hilary Robinson | Hannah Barker

One Main Street | Concord, MA 01742 | 857.321.8465 | [concordma@landvest.com](mailto:concordma@landvest.com) | [www.landvest.com](http://www.landvest.com)



# 42<sup>ND</sup> STREET

## SHOW SPONSORS

*This production is sponsored by Cast, Crew and Staff Members  
from The Umbrella Stage's Seasons 1-11*

Anonymous (3)

Susan Wentworth Austin

Brian Balduzzi, Esq.

Lara Finn Banister

Brian Boruta

Katie Cimet

Kai and Al

Shana Dirik

Elkinson Family

Carrie Flood

The Giblins

Jane Hogan

In memory of Joe & Ruth Cahill

In memory of Hal Dirik

In memory of Thomas J. Lacey

Karla Lang

In memory of Michael Leland

Susan and Kipp Livingston

Sarajane Mullins & Brian Milauskas

James Murphy & Ambar Ahmed\*

Kara Chu Nelson

Nicole O'Keeffe

Cathie Regan

Maria Duaime Robinson

Josh Telepman

Charlotte Wallace

Maria Wardwell

Nancy Curran Willis

Todd Yard

*\* Donation generously matched by Astra Zeneca*



## BLACK BIRCH II

An ABODE Community

**Nature. Plus all the amenities.**

An Active Adult Community

Please call, text or email Listing Agent:

Victoria Evarts

978-505-1733

[victoria.evarts@evusa.com](mailto:victoria.evarts@evusa.com)

[BlackBirch2concord.com](http://BlackBirch2concord.com)

[WWW.SORRENTOSPIZZERIA.COM](http://WWW.SORRENTOSPIZZERIA.COM)

**CUSTOMERS  
WANTED**

**susan lane events**

full-service catering  
wedding planner

508.783.1663

[susanlaneevents.com](http://susanlaneevents.com)

# 42<sup>ND</sup> STREET ACKNOWLEDGMENTS

Concord Printing

The Umbrella Staff

West Concord Liquors

Concord Lumber

Priscilla White Sturges, Waterman Design

James Murphy and Ambar Ahmed\*

Brian Boruta

Jeanne Bock

Pam Ellertson

Bob Greim

Wellesley Theatre Project

Kenmark Backdrops

Grosh Backdrops & Drapery

Kidstock! Creative Theater

4 Wall entertainment

ATR Treehouse

Acentech

Port Lighting Systems

Wilmington Community Television

Ryan Malyar

COMMUNITY · CHARACTER · CONFIDENCE  
**NASHOBA BROOKS**  
SCHOOL

**EXCELLENCE.  
WE TAKE IT  
PERSONALLY.**

At Nashoba Brooks School, we believe there are multiple paths to success. We create an environment where our students are free to take risks, voice their opinions, stumble, rebound, grow, and thrive. At Nashoba Brooks, we believe in learning—the lifelong, joyful, and sometimes messy pursuit of personal excellence. Come see for yourself!

**ADMISSION OPEN HOUSE**

**SUNDAY, NOVEMBER 3, 2019**

**1:00 - 3:00 P.M.**

COED LOWER SCHOOL: PRESCHOOL - GRADE 3 | ALL-GIRLS MIDDLE SCHOOL: GRADES 4-8

200 Strawberry Hill Road, Concord, Massachusetts 01742

[nashobabrooks.org/admission](http://nashobabrooks.org/admission)

978.369.4591

## **THE UMBRELLA BOARD OF DIRECTORS**

Allene Kussin, *Chair*

Deborah Yamin, *Vice Chair*

Frank Hill, *Treasurer*

Marc Silver, *Clerk*

Elizabeth Cochary Gross, *Capital Campaign Chair*

Gail Burr

Pierre Chiha

Tete Cobblah

Bryon Deysher

Cathy Folts

Kevin Foley

Michael Goodwin

Gregory Maguire

Ellen McHale

Robert Le Roy

Kate Reid

Debra Rutter

Jennifer C. Schünemann

Nancy Traversy

Tony Williams

## **THE UMBRELLA STAFF**

Jerry Wedge, Executive Director

Brian Boruta, Director of Performing Arts

Katie Cimet, Assistant Director of Development

Megan Connor, Major Gifts Officer

Bridget Doherty, Development Associate

Beth Garvin, Interim Director of Development

Stewart Ikeda, Director of Marketing & Communications

Nancy Lippe, Director of Arts & Environment

Chris Mekal, Chief Financial Officer

Danielle Moriarty, Arts Education Associate

Jess Muise, Visual Arts Manager

Rachel Olson, Arts & Environment Program Assistant

Cathie Regan, Performing Arts Program Assistant

Mike Roche, Ceramics Program Manager and Classroom Coordinator

Jason Springer, Director of Arts Education

Kathy Warren, Volunteer Coordinator

# FIRST RUGS



*One of a kind*

ARTFULLY HAND KNOTTED RUGS  
FROM AROUND THE WORLD

As a devoted sponsor of the Umbrella Community Arts Center, First Rugs wants you to be the first to know we will soon be moving to First Village of Acton on Great Road.

The development will break ground soon.  
We'll have retail space and homes for sale and rent.

**Cynthia First, President**

*Acton*

342 GREAT ROAD  
ACTON, MA 01720

*Danvers*

301 NEWBURY STREET  
DANVERS, MA 01923

866-784-7178 | [FIRSTRUGS.COM](http://FIRSTRUGS.COM)

FAIR TRADE STANDARD MAINTAINED

# 2019/2020 SEASON

*The 2019/2020 season is made possible by Kate and Mark Reid*

## **42nd STREET** Sep 27 – Oct 20

Music by Harry Warren | Lyrics by Al Dubin | Book by Michael Stewart and Mark Bramble | Directed by Brian Boruta  
*Sponsored by Friends of The Umbrella Stage Co.*

August Wilson's

## **FENCES** Nov 1 – 23

Directed by Michelle Aguilon

## **TUCK EVERLASTING** Dec 6 – 22

Book by Claudia Shear and Tim Federle | Music by Chris Miller  
Lyrics by Nathan Tysen | Based on the novel by Natalie Babbitt  
Directed by Nancy Curran Willis | *Sponsored by Gregory Maguire and Andy Newman*

## **HUNDRED DAYS** Jan 24 – Feb 16

Book by The Bengsons and Sarah Gancher | Music and Lyrics by The Bengsons | Directed by Brian Boruta | *Sponsored by Joan and John Freeman*

## **BENT** Mar 13 – 29

By Martin Sherman | Directed by Peyton Pugmire

## **WAR PAINT** Apr 24 – May 16

Book by Doug Wright | Music by Scott Frankel | Lyrics by Michael Korie | Directed by Julia Deter | Starring Leigh Barrett\* and Shana Dirik\* | *Sponsored by Jennifer and Wilson Schünemann*

# THANK YOU TO OUR GENEROUS BUSINESS PARTNERS

## LEADER

Adage Capital Management, L.P.

Salem Five

The Dubilo Hill Group at Graystone Consulting

## AMBASSADOR

3Edge Asset Management

C.E. Floyd Company, Inc.

First Rugs

Shepley Bulfinch

Waterman Design

## ADVOCATE

Black Birch Development

Draudt Design Architects

Nashoba Brooks School

Newbury Court

The Cheese Shop

## BENEFACTOR

Adelita

Best Western Concord

Concord's Colonial Inn

Fun World Language Academy

Haute Coffee

Kistler & Knapp Builders

J.McLaughlin

Mahoney's Garden Center

NorthBridge Insurance Agency, Inc.

Pitch Black Editions

Reasons to be Cheerful

Sara Campbell

Sorrento's Brick Oven Pizzeria

Susan Lane Events

Trail's End Café

Verrill Farm

West Concord Liquors